

# REDISTRICTING SPMUD MAP SCENARIO 2 - VERSION 2

	Ward 1	Ward 2	Ward 3	Ward 4	Ward 5
2020 Census Count*	16,948	17,262	16,728	16,514	17,139
Deviation #	30	344	-190	-404	221
Deviation %	0.2%	2.0%	-1.1%	-2.4%	1.3%
2010 Census Count	15,345	10,378	14,633	15,209	13,553
2019 CVAP*	11,041	9,840	12,241	11,506	11,370
2010 CVAP	9,508	5,703	11,036	10,769	9,696

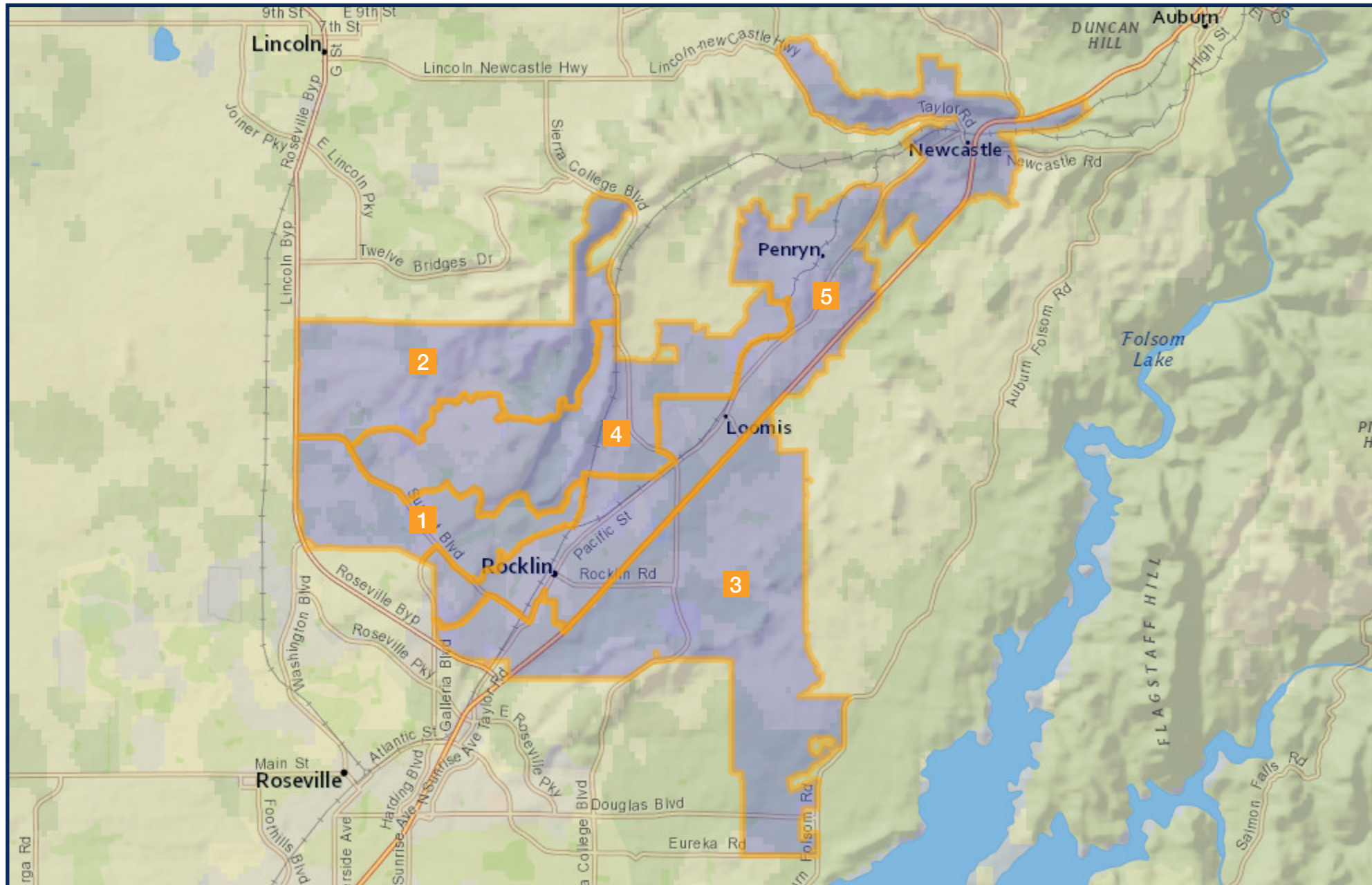
**Notes**

This map scenario was presented to the SPMUD Board of Directors Subcommittee on Redistricting and revised by subcommittee members on Monday, November 22nd, 2021. This adjusted plan will be presented to the full SPMUD Board of Directors on Thursday, December 2nd, 2021.

One constraint faced by the South Placer Municipal Utilities District in drawing new ward boundaries is the incompatibility of census block shapes with the jurisdictional boundaries of the district. In addition, census blocks in the jurisdictional area of SPMUD are unusually shaped, resulting in some unavoidable non-compactness in this plan.

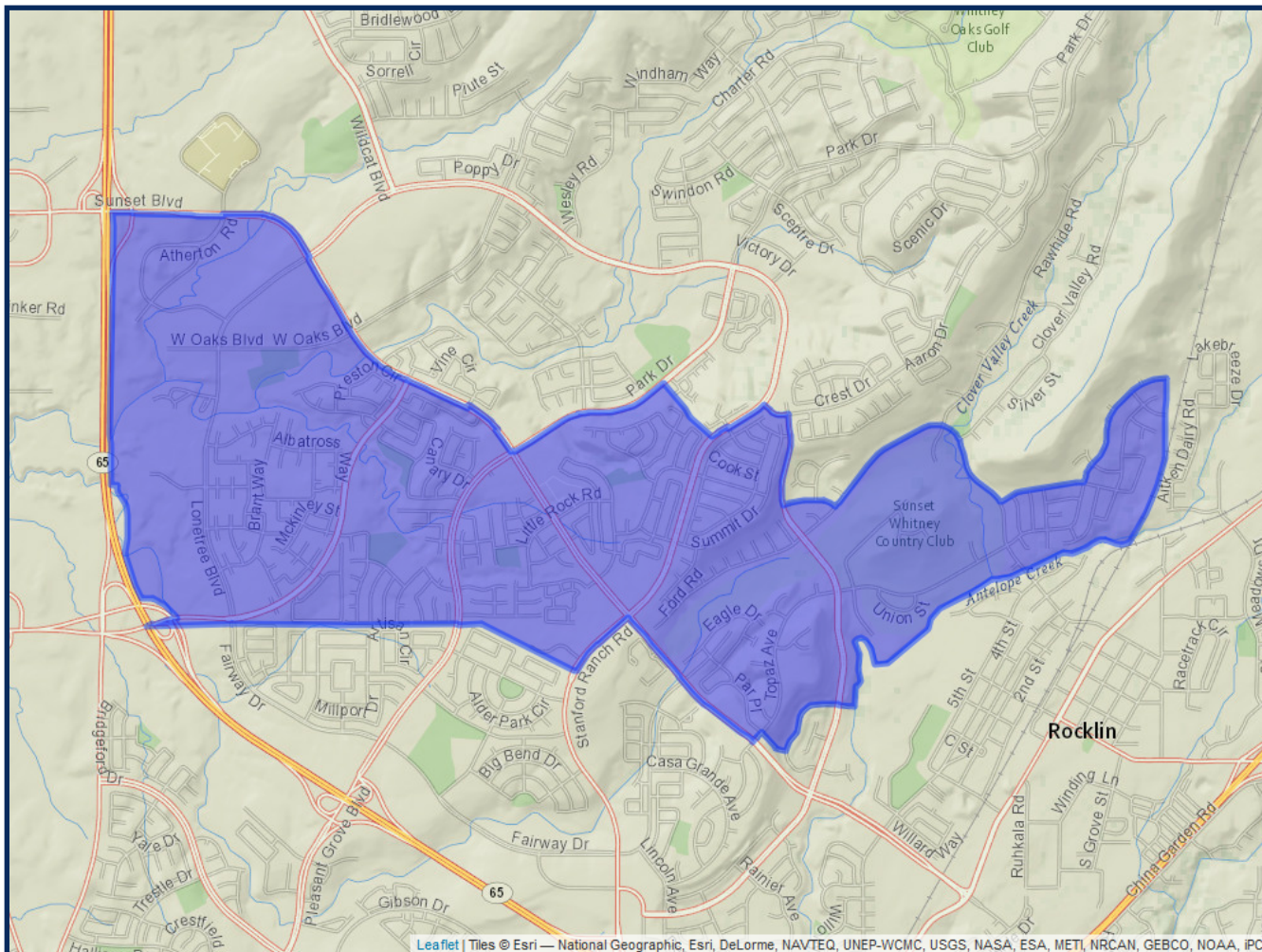
*\*Adjusted for prisoner reallocation*

# REDISTRICTING SPMUD MAP SCENARIO 2 - VERSION 2



# REDISTRICTING SPMUD MAP SCENARIO 2 - VERSION 2

## Ward 1



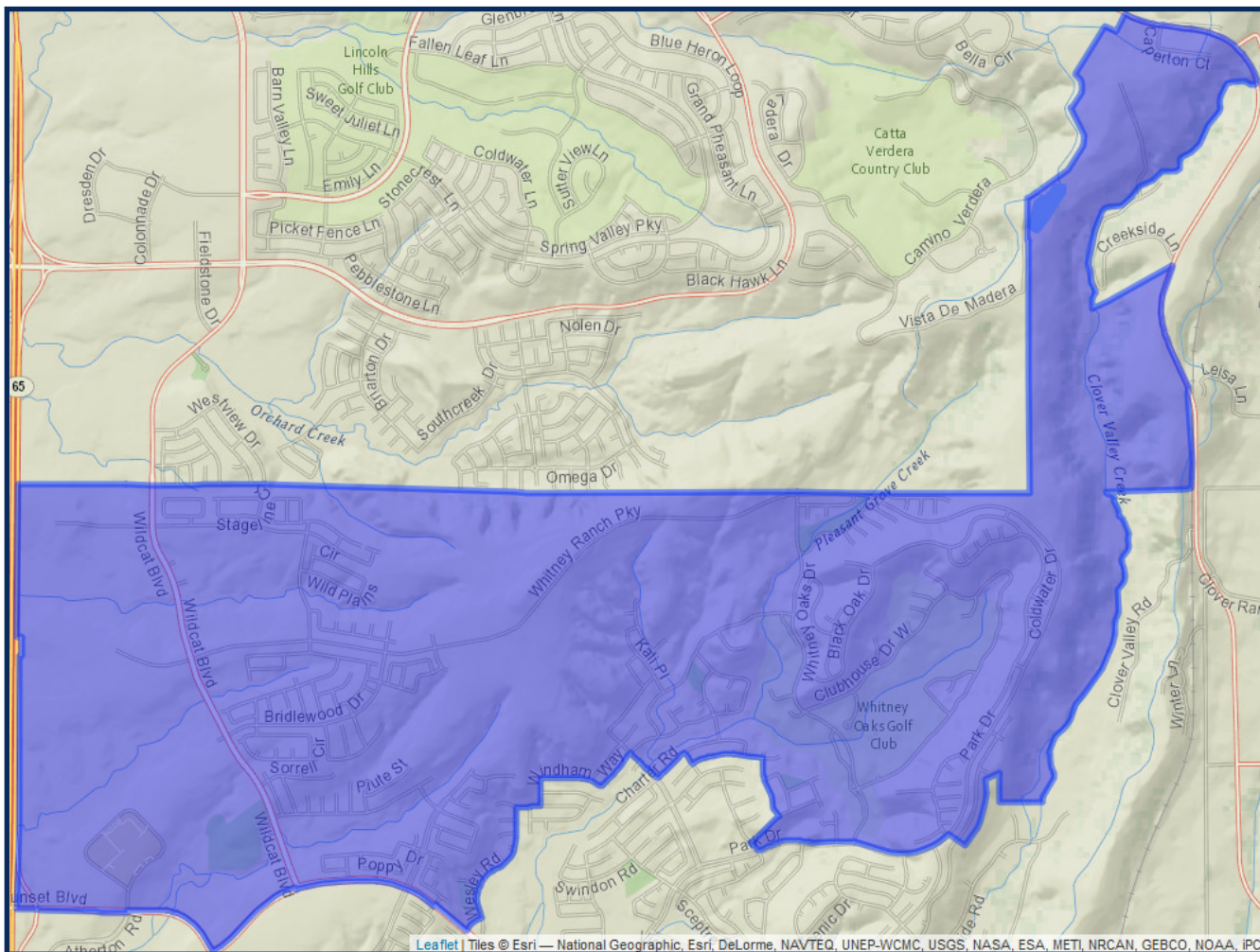
	2020 Count*		2019 CVAP*	
Total	16,948		11,041	
White	10,906	64.35%	8,084	73.22%
Black	316	1.86%	206	1.87%
Asian	1,949	11.50%	1,042	9.44%
Hispanic	2,382	14.05%	1,254	11.36%

Rocklin	16,948	100.00%
---------	--------	---------

\*Adjusted for prisoner reallocation

# REDISTRICTING SPMUD MAP SCENARIO 2 - VERSION 2

## Ward 2



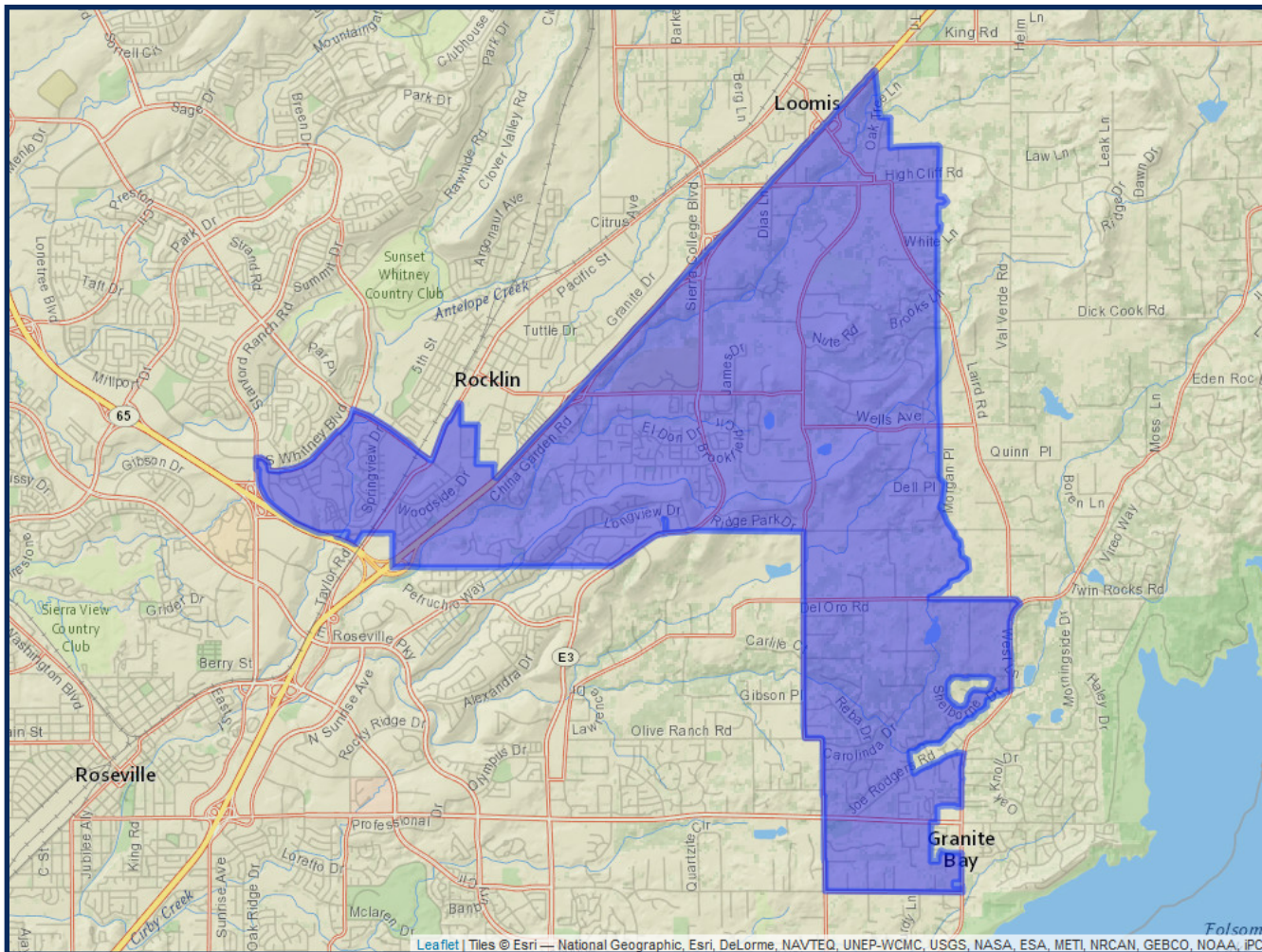
	2020 Count*		2019 CVAP*	
Total	17,262		9,840	
White	10,324	59.81%	7,315	74.34%
Black	274	1.59%	150	1.52%
Asian	3,101	17.96%	1,082	11.00%
Hispanic	2,085	12.08%	1,112	11.30%

Rocklin	17,232	99.83%
Other Uninc.	30	0.17%

\*Adjusted for prisoner reallocation

# REDISTRICTING SPMUD MAP SCENARIO 2 - VERSION 2

## Ward 3



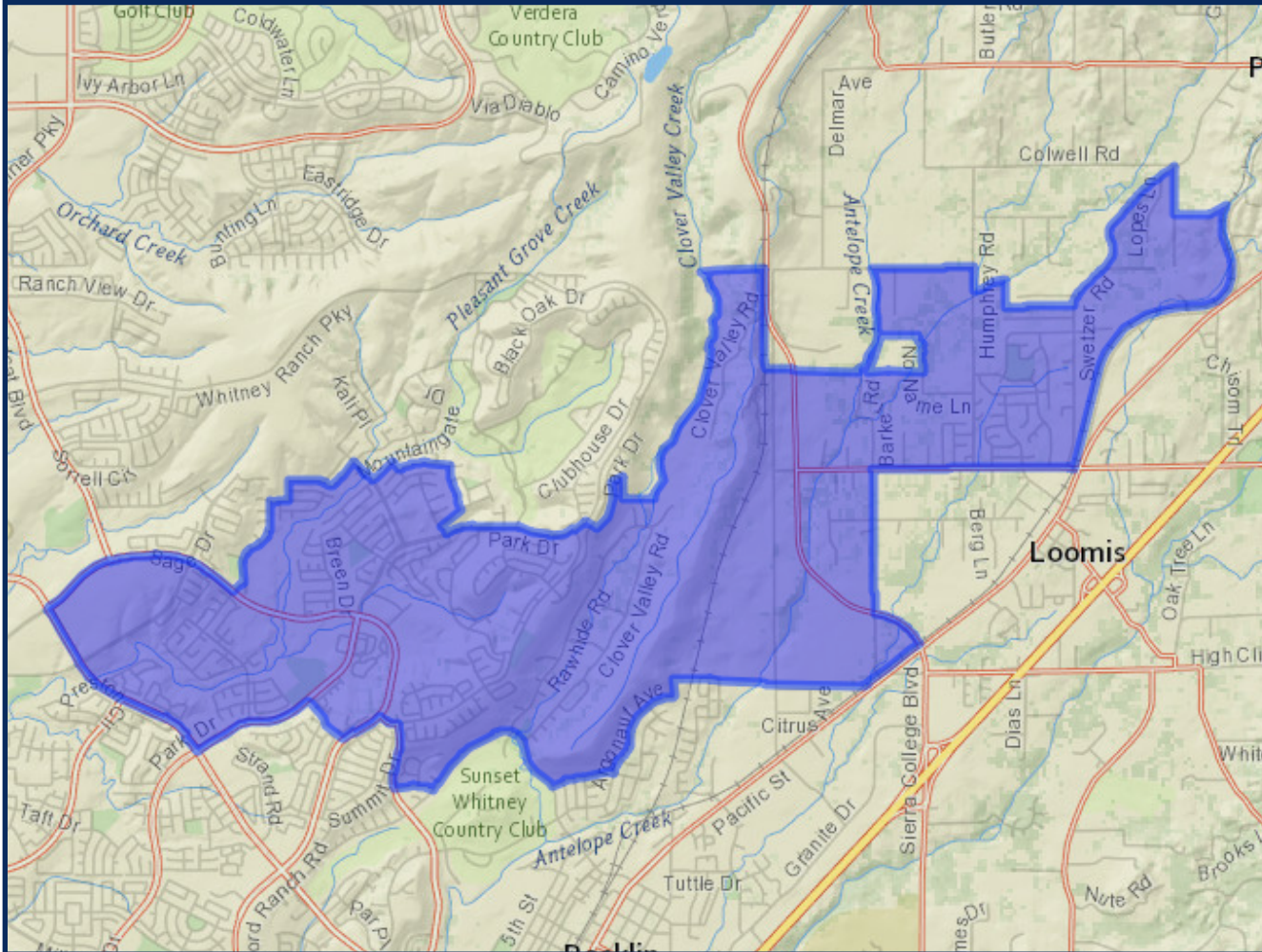
	2020 Count*		2019 CVAP*	
Total	16,728		12,241	
White	11,632	69.54%	9,923	81.06%
Black	260	1.55%	183	1.49%
Asian	1,207	7.22%	538	4.40%
Hispanic	2,183	13.05%	1,117	9.13%

Granite Bay	2,798	16.73%
Loomis	1,326	7.93%
Other Uninc.	12,604	75.35%

\*Adjusted for prisoner reallocation

# REDISTRICTING SPMUD MAP SCENARIO 2 - VERSION 2

## Ward 4



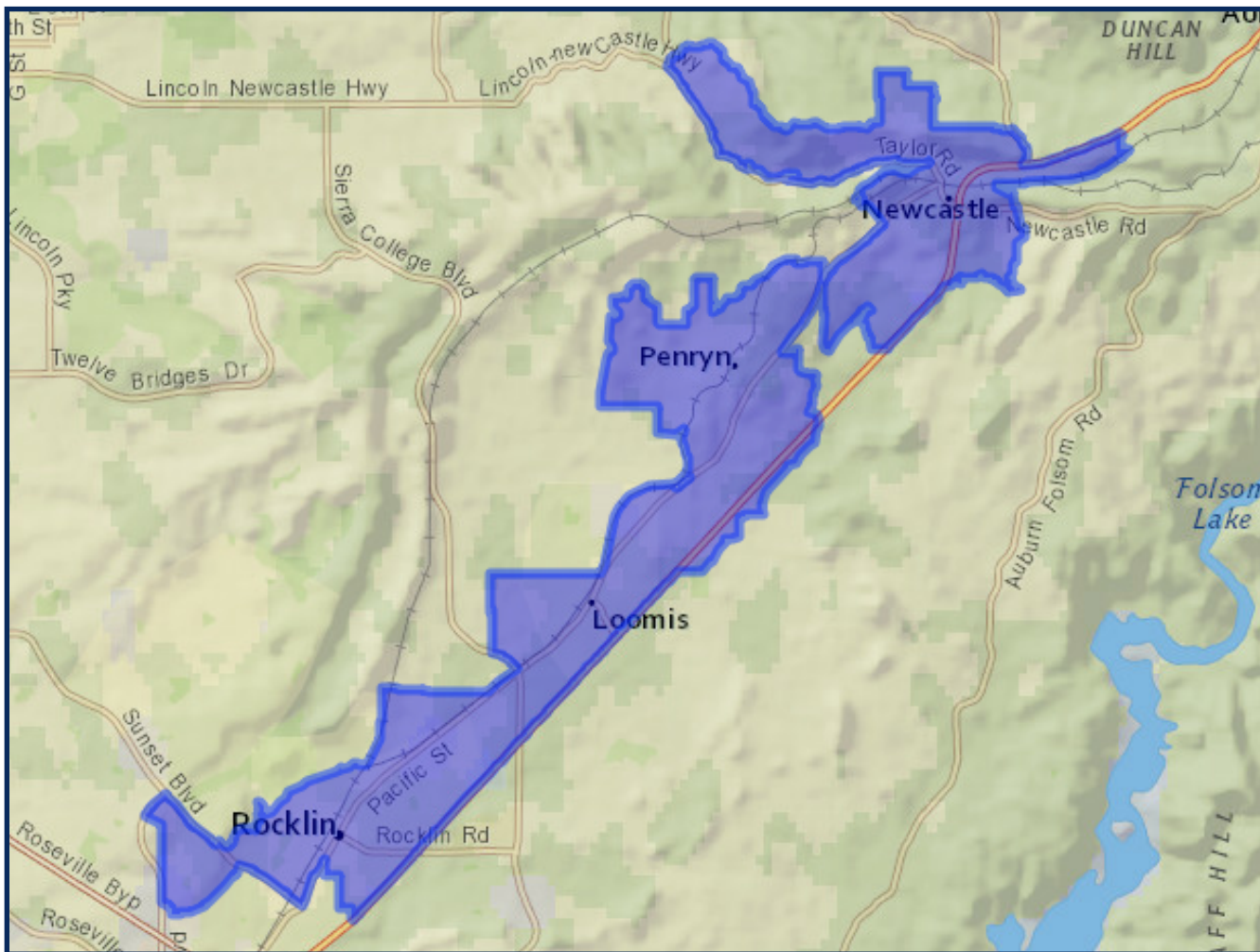
	2020 Count*		2019 CVAP*	
Total	16,514		11,506	
White	11,446	69.31%	9,152	79.54%
Black	175	1.06%	143	1.24%
Asian	1,595	9.66%	591	5.14%
Hispanic	2,021	12.24%	1,232	10.71%

Loomis	2,592	15.70%
Rocklin	13,744	83.23%
Other Uninc.	178	1.08%

\*Adjusted for prisoner reallocation

# REDISTRICTING SPMUD MAP SCENARIO 2 - VERSION 2

## Ward 5



	2020 Count*		2019 CVAP*	
Total	17,139		11,370	
White	11,907	69.47%	9,152	80.49%
Black	243	1.42%	212	1.86%
Asian	940	5.48%	342	3.01%
Hispanic	2,678	15.63%	1,064	9.36%

Loomis	2,928	17.08%
Newcastle	860	5.02%
Penryn	1,153	6.73%
Rocklin	11,157	65.10%
Other Uninc.	1,041	6.07%

\*Adjusted for prisoner reallocation