

REDISTRICTING SPMUD MAP SCENARIO 4 - VERSION 2

	Ward 1	Ward 2	Ward 3	Ward 4	Ward 5
2020 Census Count*	17,096	16,824	16,783	17,062	16,826
Deviation #	178	-94	-135	144	-92
Deviation %	1.0%	-0.6%	-0.8%	0.8%	-0.5%
2010 Census Count	16,371	11,269	15,537	12,690	13,251
2019 CVAP*	11,535	9,397	12,510	12,105	10,451
2010 CVAP	11,200	6,027	11,899	9,225	8,360

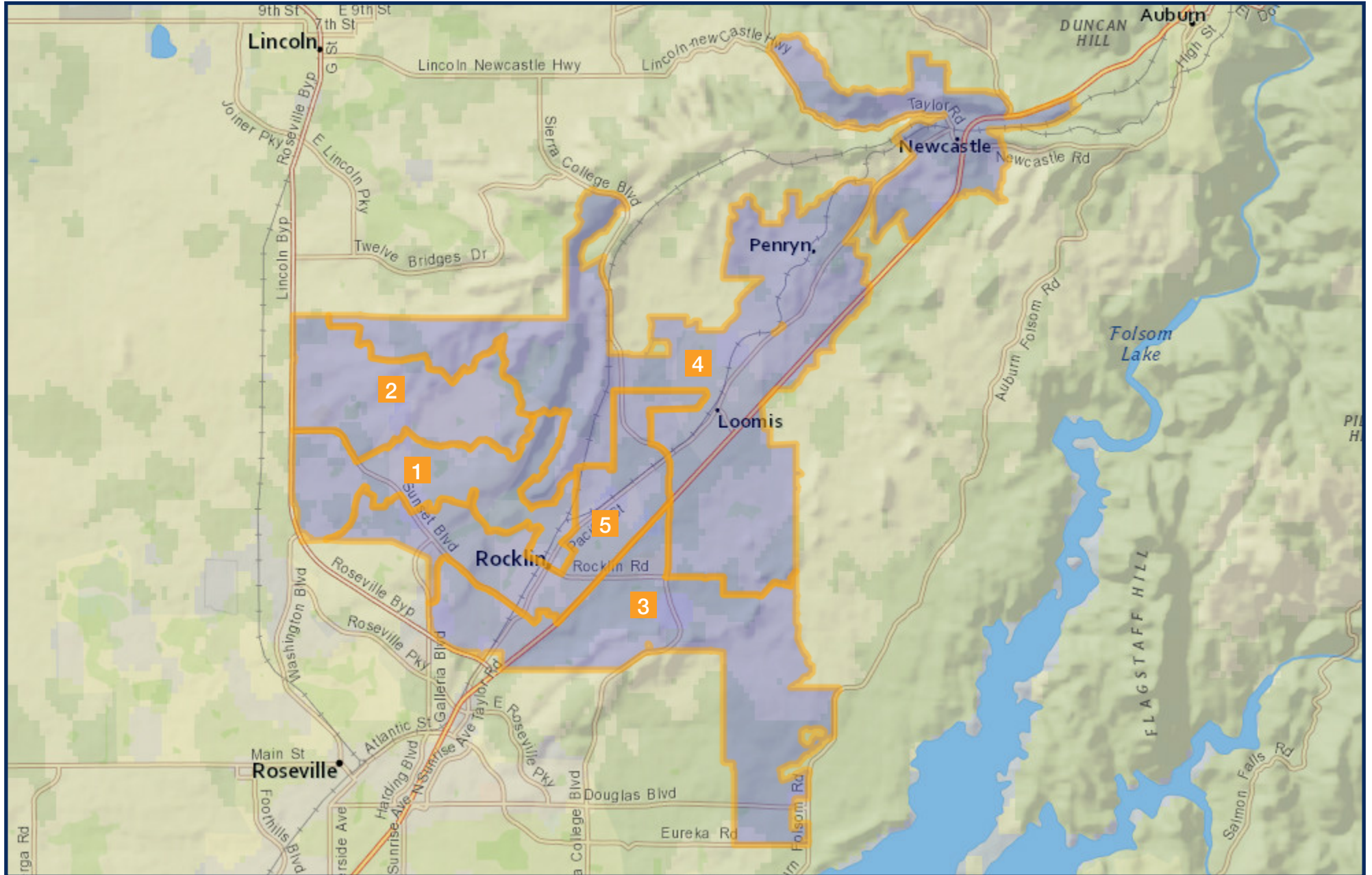
Notes

This map scenario was presented to the SPMUD Board of Directors Subcommittee on Redistricting and revised by subcommittee members on Monday, November 22nd, 2021. This adjusted plan will be presented to the full SPMUD Board of Directors on Thursday, December 2nd, 2021.

One constraint faced by the South Placer Municipal Utilities District in drawing new ward boundaries is the incompatibility of census block shapes with the jurisdictional boundaries of the district. In addition, census blocks in the jurisdictional area of SPMUD are unusually shaped, resulting in some unavoidable non-compactness in this plan.

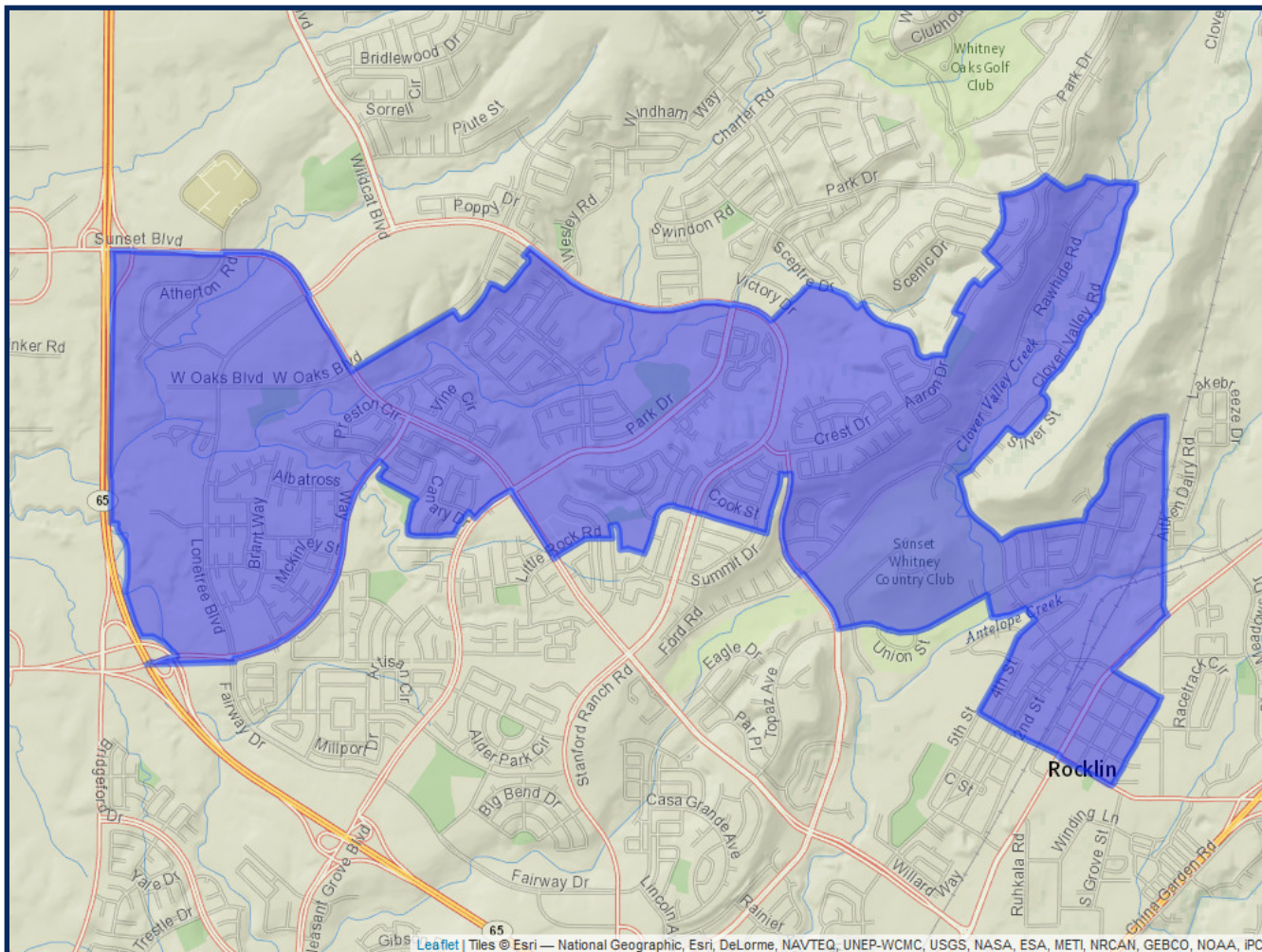
**Adjusted for prisoner reallocation*

REDISTRICTING SPMUD MAP SCENARIO 4 - VERSION 2



REDISTRICTING SPMUD MAP SCENARIO 4 - VERSION 2

Ward 1



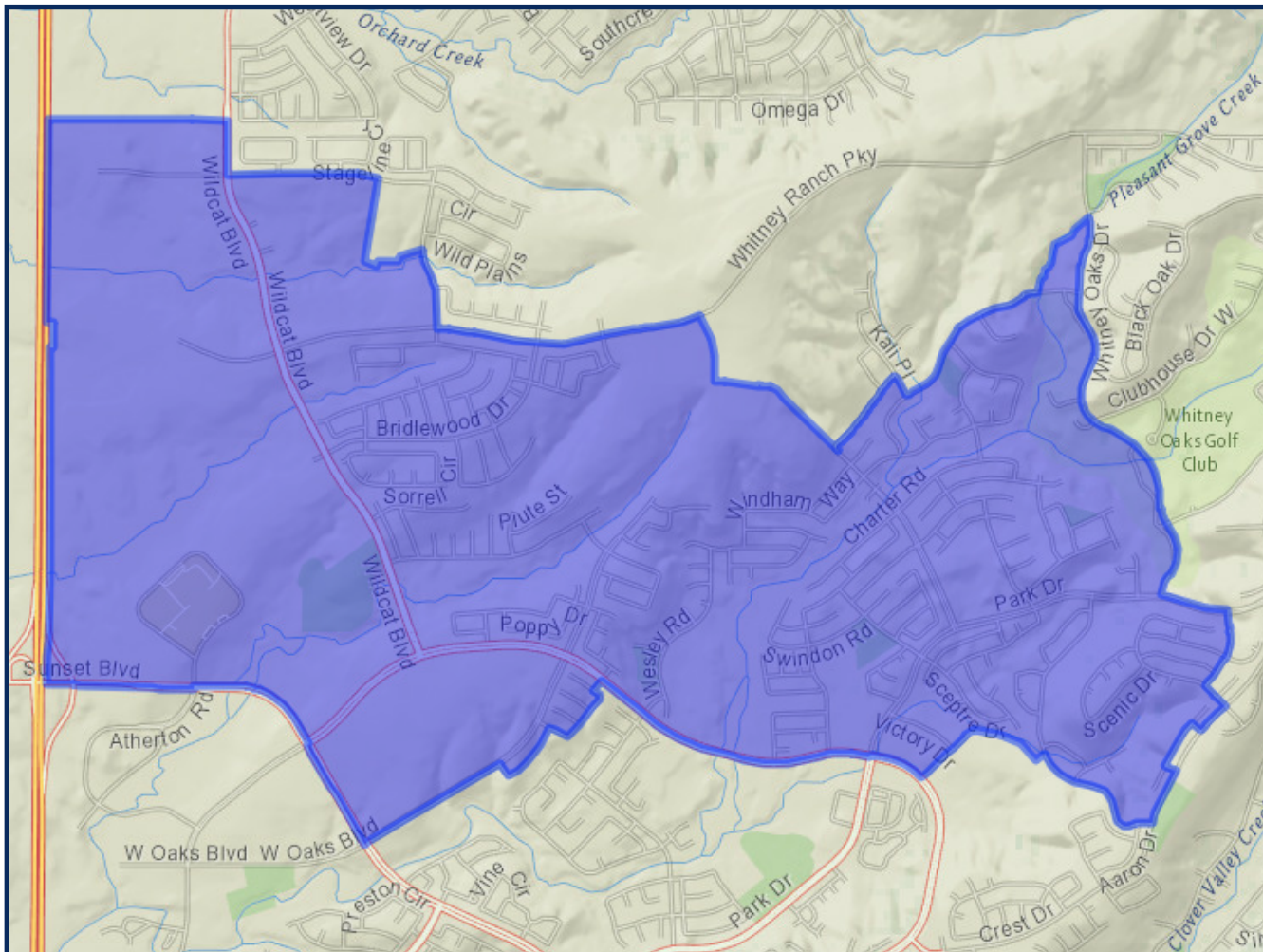
	2020 Count*		2019 CVAP*	
Total	17,096		11,535	
White	11,457	67.02%	8,841	76.64%
Black	286	1.67%	204	1.77%
Asian	1,498	8.76%	744	6.45%
Hispanic	2,507	14.66%	1,361	11.80%

Rocklin	17,096	100.00%
----------------	--------	---------

*Adjusted for prisoner reallocation

REDISTRICTING SPMUD MAP SCENARIO 4 - VERSION 2

Ward 2



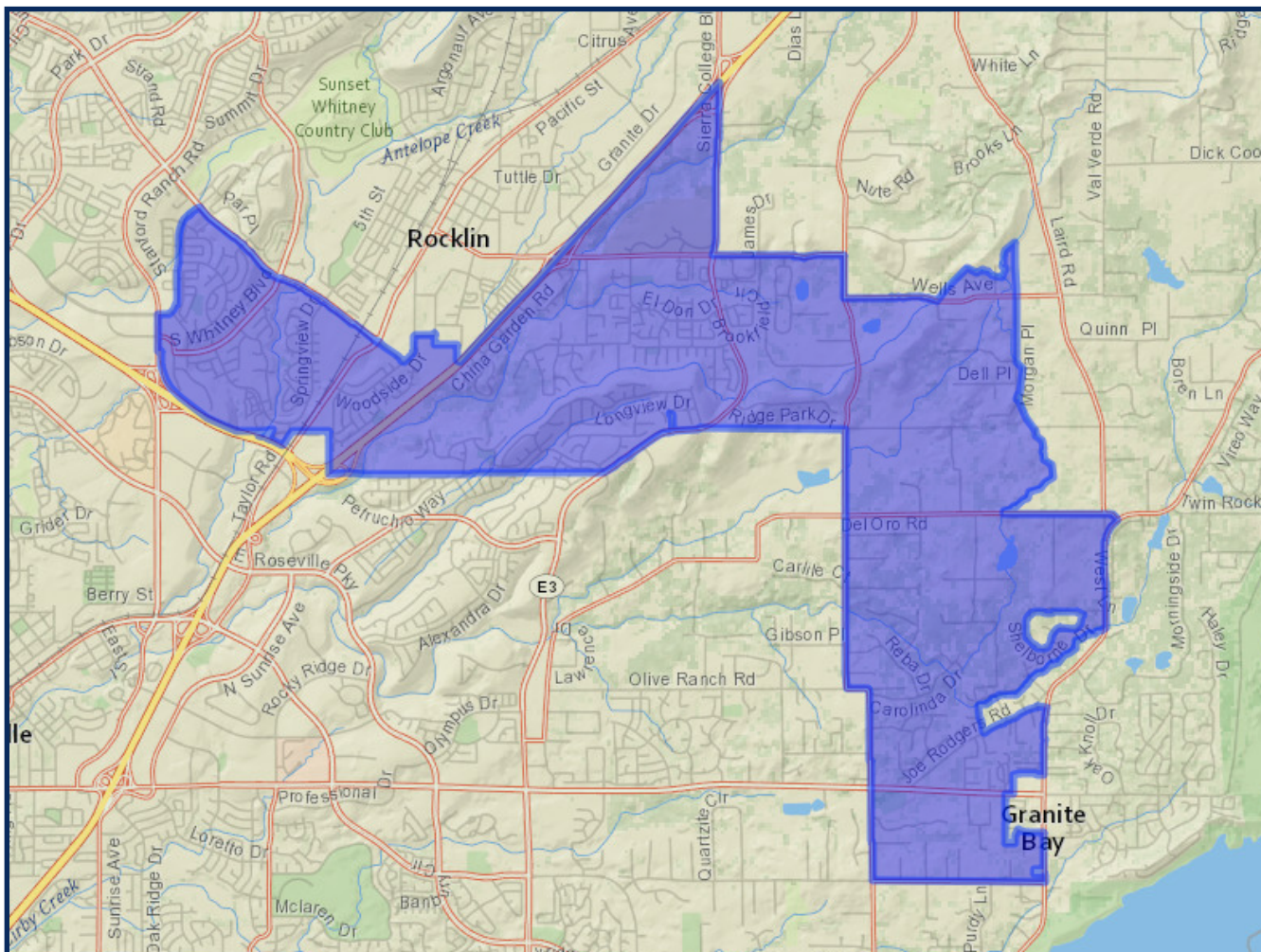
	2020 Count*		2019 CVAP*	
Total	16,824		9,397	
White	10,165	60.42%	6,909	73.52%
Black	270	1.60%	181	1.93%
Asian	2,878	17.11%	1,069	11.38%
Hispanic	2,081	12.37%	1,043	11.10%

Rocklin	16,824	100.00%
---------	--------	---------

*Adjusted for prisoner reallocation

REDISTRICTING SPMUD MAP SCENARIO 4 - VERSION 2

Ward 3



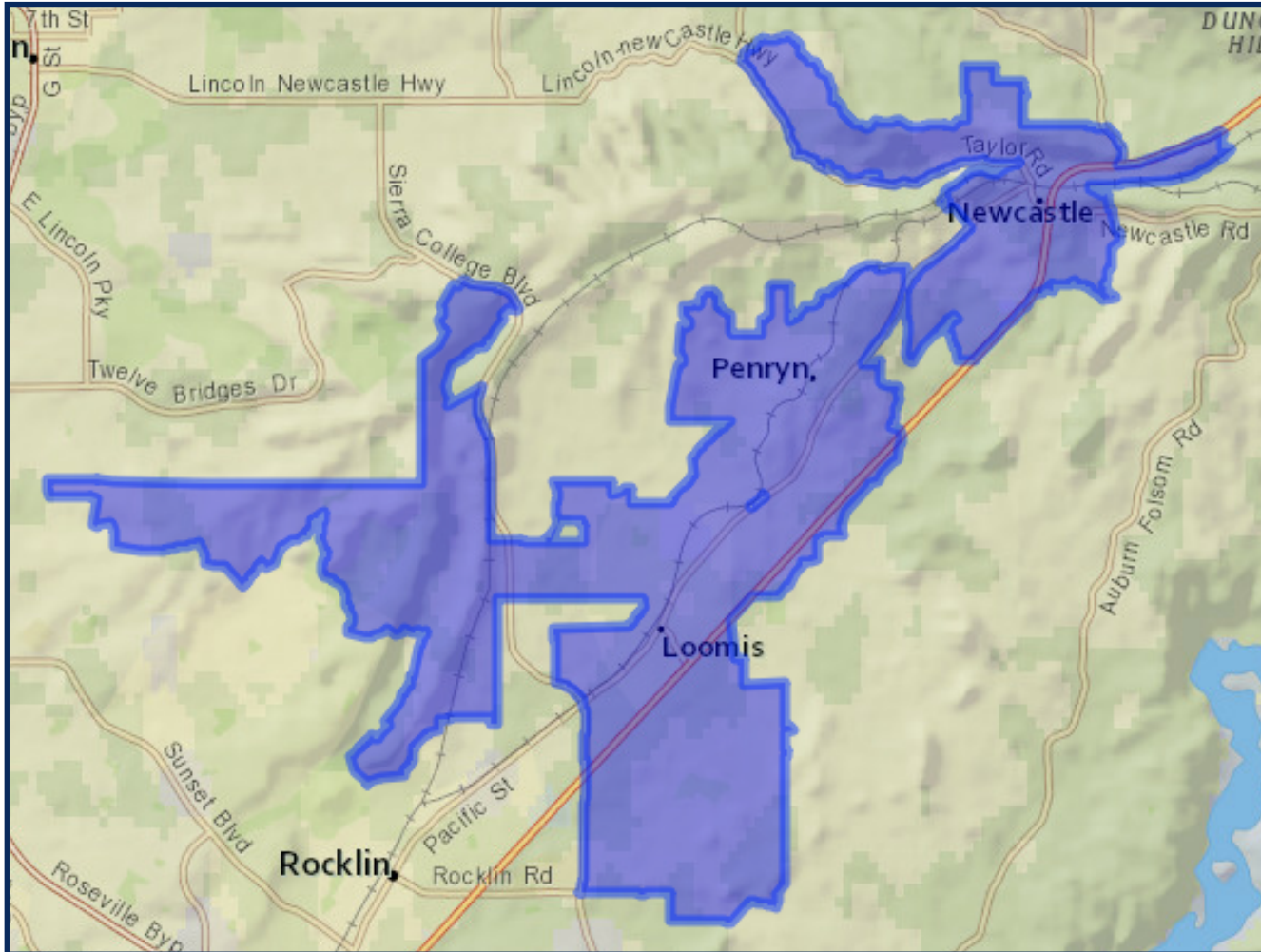
	2020 Count*		2019 CVAP*	
Total	16,783		12,510	
White	11,590	69.06%	9,849	78.73%
Black	266	1.58%	223	1.78%
Asian	1,138	6.78%	575	4.60%
Hispanic	2,320	13.82%	1,290	10.31%

Granite Bay	2,798	16.67%
Loomis	497	2.96%
Rocklin	13,488	80.37%

*Adjusted for prisoner reallocation

REDISTRICTING SPMUD MAP SCENARIO 4 - VERSION 2

Ward 4



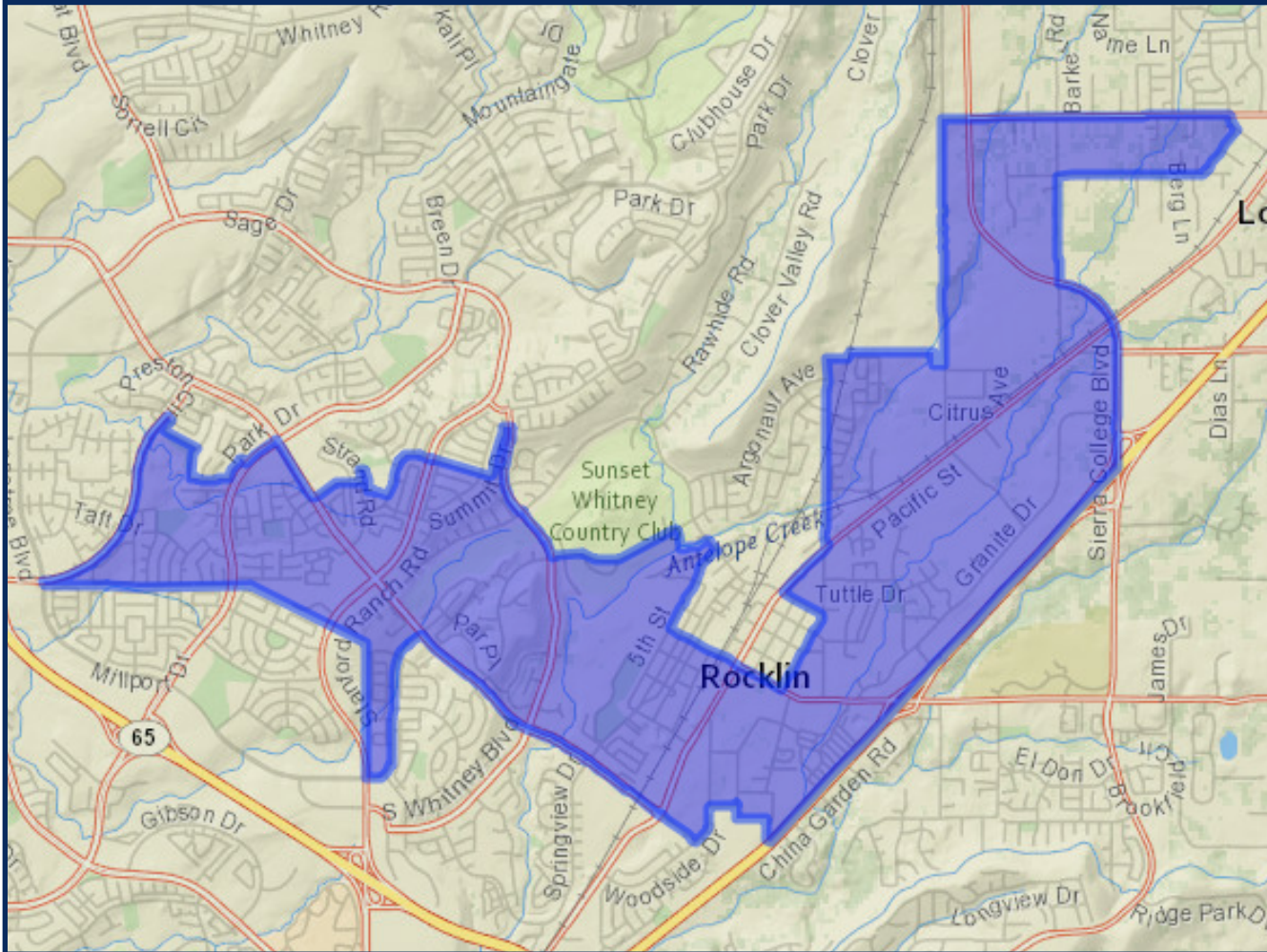
	2020 Count*		2019 CVAP*	
Total	17,062		12,105	
White	12,025	70.48%	9,993	82.55%
Black	114	0.67%	74	0.61%
Asian	1,610	9.44%	476	3.93%
Hispanic	1,940	11.37%	1,031	8.52%

Loomis	5,701	33.41%
Newcastle	860	5.04%
Penryn	1,153	6.76%
Rocklin	8,099	47.47%
Other Uninc.	1,249	7.32%

*Adjusted for prisoner reallocation

REDISTRICTING SPMUD MAP SCENARIO 4 - VERSION 2

Ward 5



	2020 Count*		2019 CVAP*	
Total	16,826		10,451	
White	10,978	65.24%	8,034	76.87%
Black	332	1.97%	212	2.03%
Asian	1,668	9.91%	731	6.99%
Hispanic	2,501	14.86%	1,054	10.09%

Loomis	648	3.85%
Rocklin	16,178	96.15%

*Adjusted for prisoner reallocation