

SOUTH PLACER MUNICIPAL UTILITY DISTRICT

ORDINANCE NO. 22-01

AN ORDINANCE TO TRANSITION FROM AT-LARGE/FROM-DISTRICT ELECTIONS TO BY-DISTRICT/FROM-DISTRICT ELECTIONS AND RE-ESTABLISHING DISTRICT WARD BOUNDARIES

SECTION 1

The Board of Directors of the South Placer Municipal Utility District (the “District”) hereby finds and declares as follows:

A. WHEREAS, the South Placer Municipal Utility District was formed and organized under the Municipal Utility District Act (the “MUD Act”) of the State of California (California Public Utilities Code Section 11501 et seq.); and.

B. WHEREAS, the MUD Act established a “from-district” electoral system, in which a Director must be a resident and voter of the ward they represent but is elected at large by all voters of the District; and

C. WHEREAS, pursuant to Section 11823 of the MUD Act, the Board shall by resolution or ordinance fix the boundaries of the ward for the purpose of electing directors therefrom; and

D. WHEREAS, in conformance with the California Voting Rights Act (California Elections Code Section 14025 – 14032), the District intends to transition to by-district elections, in which the elected official must reside in a particular electoral district or ward and be elected by only those voters residing within the same ward; and

E. WHEREAS, Section 22000 of the Election Code authorizes the Board of Directors to adjust District Ward boundaries by resolution or ordinance whenever they determine that a sufficient change in population has occurred, and it is desirable to do so. The District last adjusted ward boundaries by Resolution 06-09, adopted on October 5, 2006; and

F. WHEREAS, on November 4, 2021, the South Placer Municipal Utility District Board of Directors Adopted Resolution 21-43 declaring its intent to transition from At-Large/From-District elections to By-District/From-District elections; and

G. WHEREAS, the District retained the services of an expert demographer to prepare draft maps reflecting public input received, as well as criteria established by the California Voting Rights Act; and

H. WHEREAS, the demographer prepared three (3) proposed maps, based on input from the Board and staff, and the District received one (1) proposed map submitted by a citizen; and

I. WHEREAS, in compliance with Elections Code Section 10010, the District did solicit public input into the process and conducted public hearings on November 4, and December 2, 2021, and February 3, 2022, and further conducted an afterhours public workshop on January 6, 2022. The proposed maps were made available to the public for consideration in advance and have been posted to the District's website.

J. WHEREAS, at the public hearing on February 3, 2022, the Board considered all proposed maps and, after deliberation and receiving input from the public, staff, and the demographer, determined that the map known as "Scenario 2" and attached to this Ordinance as "Exhibit 1" most closely satisfied the requisite criteria; and

NOW, THEREFORE, BE IT ENACTED BY THE BOARD OF DIRECTORS OF THE SOUTH PLACER MUNICIPAL UTILITY DISTRICT AS FOLLOWS:

SECTION 2

Establishment of Electoral Districts (Wards). The government of the South Placer Municipal Utility District is vested in a board of five directors, one from each of five wards. Each director shall reside in a particular ward and be elected by only those voters residing within the same ward.

SECTION 3

Ward Boundaries. The South Placer Municipal Utility District Wards 1 through 5 are hereby re-established and are identified in Exhibit 1, attached hereto. In establishing these boundaries pursuant to Elections Code Section 10010, the Board of Directors has given due consideration to the criteria listed in

California Elections Code Section 21500(c), including topography, geography, cohesiveness, contiguity, integrity, compactness of territory, communities of interest and balance of population.

SECTION 4

Vacancies. Notwithstanding any other provision of this Ordinance, each Director in office at the time this Ordinance takes effect shall continue in office until the expiration of the term to which he or she was elected. In the event a vacancy occurs before the expiration of the term of a Director in office at the time this Ordinance takes effect, a person who is appointed or elected by special election to fill such vacancy shall not be subject to the provisions of this ordinance, except that the Director appointed by the Board or elected by special election shall only serve out the remainder of the at-large term to which he or she is appointed or elected.

SECTION 5

This Ordinance shall go into effect on April 4, 2022.

SECTION 6

This Ordinance was introduced at a regular meeting of the Board of Directors held on the 3rd Day of February 2022.

SECTION 7

Upon final passage, this Ordinance, or a summary of this Ordinance, shall be published once a week for two successive weeks in a newspaper of general circulation within the District, pursuant to the provisions of Sections 11534 and 11910 of the Public Utilities Code.

PASSED AND ADOPTED at a regular meeting of the Board of Directors of South Placer Municipal Utility District on this 3rd day of March 2022 by the following vote:

AYES: 5

NOES: 0

ABSTAIN: 0

ABSENT: 0

SOUTH PLACER MUNICIPAL UTILITY DISTRICT

Signed: _____

Gerald P. Mitchell, President of the Board of Directors

ATTEST:

Emilie Costan

Emilie Costan, Board Secretary

Ordinance 22-01
Attachment "A"
Census Blocks by Ward

Ward 1 – Census Blocks

060610211061000	060610211311014	060610229001015	060610230002007
060610211061001	060610211311015	060610229001016	060610230002008
060610211061002	060610211311016	060610229002000	060610230002009
060610211061003	060610211312000	060610229002001	060610230002010
060610211061004	060610211312001	060610229002002	060610230002011
060610211061005	060610211312002	060610229002003	060610230002021
060610211062000	060610211312003	060610229002004	060610230002022
060610211062001	060610211312004	060610229002005	060610230002023
060610211062002	060610211312005	060610229002006	060610230002024
060610211062003	060610211312006	060610229002007	060610230002025
060610211062004	060610211312007	060610229003000	060610230002026
060610211062005	060610211312008	060610229003001	060610230002027
060610211062006	060610211312009	060610229003002	060610230002028
060610211062011	060610211312011	060610229003003	060610230002029
060610211062012	060610211312012	060610229003004	060610230002030
060610211062013	060610211312013	060610229003005	060610230002031
060610211233012	060610211312014	060610229003006	060610230002032
060610211233013	060610211312015	060610229003007	
060610211234013	060610211312016	060610229003008	
060610211234014	060610211312017	060610229003009	
060610211234015	060610211312018	060610229003010	
060610211234017	060610211312019	060610229003011	
060610211234019	060610211313008	060610229003012	
060610211234020	060610211313009	060610230001000	
060610211234021	060610211313010	060610230001001	
060610211234022	060610211313011	060610230001002	
060610211234023	060610211313012	060610230001003	
060610211234024	060610211313013	060610230001004	
060610211234025	060610211313015	060610230001005	
060610211234027	060610213234035	060610230001006	
060610211302009	060610229001000	060610230001007	
060610211311000	060610229001001	060610230001008	
060610211311001	060610229001002	060610230001009	
060610211311002	060610229001003	060610230001010	
060610211311003	060610229001004	060610230001011	
060610211311004	060610229001005	060610230001012	
060610211311005	060610229001006	060610230001013	
060610211311006	060610229001007	060610230001014	
060610211311007	060610229001008	060610230001015	
060610211311008	060610229001009	060610230002000	
060610211311009	060610229001010	060610230002001	
060610211311010	060610229001011	060610230002002	
060610211311011	060610229001012	060610230002003	
060610211311012	060610229001013	060610230002005	
060610211311013	060610229001014	060610230002006	

Ward 2 – Census Block Blocks

060610211221000	060610213231012	060610213233012	060610213234036
060610211221001	060610213231013	060610213234000	060610213234038
060610211221002	060610213231014	060610213234001	060610213234039
060610211221003	060610213231015	060610213234002	060610213241000
060610211221004	060610213231016	060610213234003	060610213241001
060610211221005	060610213231017	060610213234004	060610213241002
060610211221006	060610213231018	060610213234005	060610213241003
060610211221007	060610213231019	060610213234006	060610213241004
060610211221008	060610213231020	060610213234007	060610213241005
060610211222000	060610213231021	060610213234008	060610213241006
060610211222001	060610213231022	060610213234009	060610213241007
060610211222002	060610213231023	060610213234010	060610213241008
060610211222003	060610213231024	060610213234011	060610213241009
060610211222004	060610213231025	060610213234012	060610213241010
060610211222005	060610213231026	060610213234015	060610213241011
060610211222008	060610213232000	060610213234016	060610213243000
060610211222009	060610213232001	060610213234017	060610213243001
060610211222010	060610213232005	060610213234018	060610213243002
060610211234003	060610213232008	060610213234019	060610213243003
060610211234007	060610213232009	060610213234020	060610213243004
060610211234010	060610213232010	060610213234021	060610213243005
060610211234030	060610213232011	060610213234022	060610213243006
060610213231000	060610213233000	060610213234023	060610213243007
060610213231001	060610213233001	060610213234024	060610213243008
060610213231002	060610213233002	060610213234025	060610213243009
060610213231003	060610213233003	060610213234026	060610213243010
060610213231004	060610213233004	060610213234027	060610213243011
060610213231005	060610213233005	060610213234028	060610213243012
060610213231006	060610213233006	060610213234029	060610213243013
060610213231007	060610213233007	060610213234030	060610213243017
060610213231008	060610213233008	060610213234031	060610213243019
060610213231009	060610213233009	060610213234032	060610213243020
060610213231010	060610213233010	060610213234033	060610213243021
060610213231011	060610213233011	060610213234034	

Ward 3 – Census Blocks

060610206043000	060610206072012	060610211082026	060610211092020
060610206043001	060610206072013	060610211082027	060610211093000
060610206043002	060610206072014	060610211082029	060610211093001
060610206043003	060610206072015	060610211091000	060610211093002
060610206043004	060610206072016	060610211091001	060610211093003
060610206043005	060610206072017	060610211091002	060610211093004
060610206043006	060610206072018	060610211091003	060610211093005
060610206043007	060610206072019	060610211091004	060610211093006
060610206043009	060610206072020	060610211091005	060610211093007
060610206044004	060610206072021	060610211091006	060610211093008
060610206044006	060610206072022	060610211091007	060610211282009
060610206044007	060610206072023	060610211091008	060610211282010
060610206044008	060610206072024	060610211091009	060610211282023
060610206044009	060610206072025	060610211091010	060610211291000
060610206044010	060610206072026	060610211091012	060610211291001
060610206044012	060610206072027	060610211091013	060610211291002
060610206044013	060610206072028	060610211091014	060610211291003
060610206052001	060610206072029	060610211091015	060610211291004
060610206071008	060610206072030	060610211091016	060610211291005
060610206071009	060610206072031	060610211091017	060610211291006
060610206071010	060610206072032	060610211091018	060610211291007
060610206071011	060610206072033	060610211091019	060610211291008
060610206071012	060610206072041	060610211091020	060610211291009
060610206071013	060610206072042	060610211092000	060610211291010
060610206071014	060610206072043	060610211092001	060610211291011
060610206071015	060610206072044	060610211092002	060610211291012
060610206071016	060610211033016	060610211092003	060610211291013
060610206071017	060610211033017	060610211092004	060610211292000
060610206071018	060610211033025	060610211092005	060610211292001
060610206071019	060610211061007	060610211092006	060610211292002
060610206071020	060610211081002	060610211092007	060610211292003
060610206071021	060610211081003	060610211092008	060610211292005
060610206071022	060610211081004	060610211092009	060610211292006
060610206071023	060610211081005	060610211092010	060610211292007
060610206071024	060610211082017	060610211092011	060610211292008
060610206072002	060610211082018	060610211092012	060610211292009
060610206072005	060610211082019	060610211092013	060610211292010
060610206072006	060610211082020	060610211092014	060610211292011
060610206072007	060610211082021	060610211092015	060610211292012
060610206072008	060610211082022	060610211092016	060610211292016
060610206072009	060610211082023	060610211092017	060610211292017
060610206072010	060610211082024	060610211092018	060610211292018
060610206072011	060610211082025	060610211092019	060610212031027

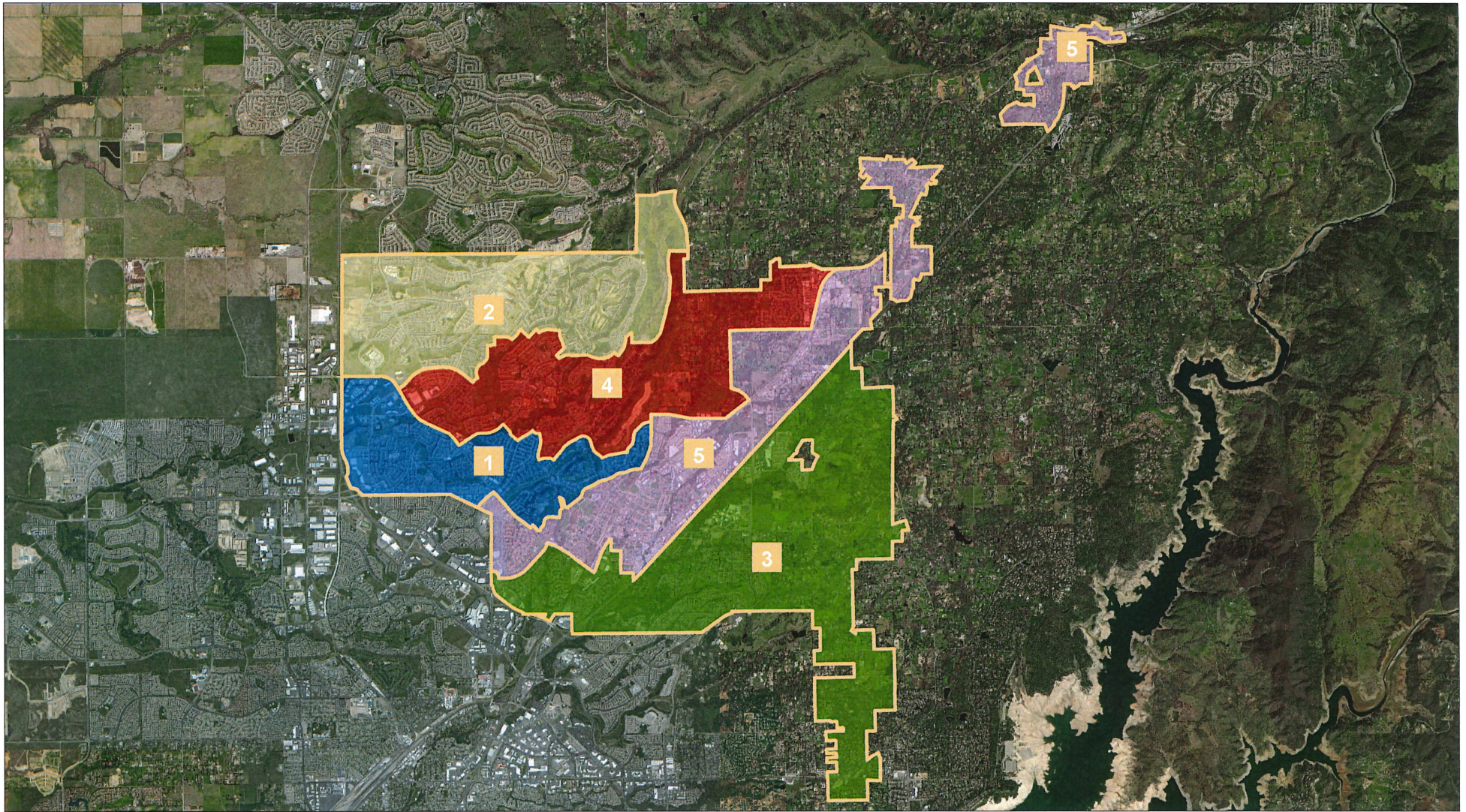
Ward 4 – Census Blocks

060610211222006	060610211232005	060610211302000	060610212033006
060610211222007	060610211232006	060610211302001	060610212033007
060610211222011	060610211232007	060610211302002	060610212033008
060610211222012	060610211232008	060610211302003	060610212033009
060610211231000	060610211232009	060610211302004	060610212033011
060610211231001	060610211232010	060610211302005	060610212033012
060610211231002	060610211232011	060610211302006	060610212033013
060610211231003	060610211232012	060610211302007	060610212033014
060610211231004	060610211232013	060610211302008	060610212033015
060610211231005	060610211232014	060610211302010	060610212033016
060610211231006	060610211232015	060610211302011	060610213234037
060610211231007	060610211232016	060610211302012	060610213242000
060610211231008	060610211232017	060610211302013	060610213242001
060610211231009	060610211233000	060610211312010	060610213242002
060610211231010	060610211233001	060610211313000	060610213242003
060610211231011	060610211233002	060610211313001	060610213242004
060610211231012	060610211233003	060610211313002	060610213242005
060610211231013	060610211233004	060610211313003	060610213242006
060610211231014	060610211233005	060610211313004	060610213242007
060610211231015	060610211233006	060610211313005	060610213242008
060610211231016	060610211233007	060610211313006	060610213242009
060610211231017	060610211233008	060610211313007	060610213242010
060610211231018	060610211233009	060610211313014	060610213242011
060610211231019	060610211233010	060610212032000	060610213242012
060610211231020	060610211233011	060610212032009	060610213242013
060610211231021	060610211233014	060610212032010	060610213242014
060610211231022	060610211233015	060610212032011	060610213242015
060610211231023	060610211233016	060610212032012	060610213242016
060610211231024	060610211233017	060610212032013	060610213242017
060610211231025	060610211233018	060610212032014	060610213242018
060610211231026	060610211234009	060610212032015	060610213242019
060610211231027	060610211234011	060610212032017	060610213242020
060610211231028	060610211234012	060610212032018	060610213242021
060610211231029	060610211234018	060610212032019	060610213242022
060610211231030	060610211234029	060610212032020	060610213242023
060610211231031	060610211301000	060610212032021	060610213243014
060610211232000	060610211301001	060610212032022	060610213243015
060610211232001	060610211301002	060610212032025	060610213243016
060610211232002	060610211301003	060610212033001	060610213243018
060610211232003	060610211301004	060610212033004	060610213243022
060610211232004	060610211301005	060610212033005	

Ward 5 – Census Blocks

060610205012000	060610211031005	060610211033006	060610211062015
060610205012001	060610211031006	060610211033007	060610211081000
060610205012002	060610211031007	060610211033008	060610211081001
060610205012003	060610211031008	060610211033009	060610211082000
060610205012004	060610211031009	060610211033010	060610211082001
060610205012005	060610211031010	060610211033011	060610211082002
060610205012006	060610211031011	060610211033012	060610211082003
060610205012007	060610211031012	060610211033013	060610211082004
060610205012008	060610211031013	060610211033014	060610211082005
060610205012009	060610211031014	060610211033015	060610211082006
060610205012010	060610211031015	060610211033018	060610211082007
060610205012011	060610211031016	060610211033019	060610211082008
060610205012012	060610211031017	060610211033020	060610211082009
060610205012013	060610211031018	060610211033021	060610211082010
060610205012014	060610211031019	060610211033022	060610211082011
060610205012016	060610211031020	060610211033023	060610211082012
060610205012021	060610211031021	060610211033024	060610211082013
060610205012022	060610211031022	060610211033026	060610211082014
060610205013005	060610211031023	060610211034000	060610211082015
060610205013011	060610211031024	060610211034001	060610211082016
060610205013013	060610211031025	060610211034002	060610211234016
060610205013014	060610211031026	060610211034003	060610211234026
060610205022008	060610211031027	060610211034004	060610211281000
060610205023013	060610211032000	060610211034005	060610211281001
060610205023014	060610211032001	060610211034006	060610211281002
060610205023017	060610211032002	060610211034007	060610211281003
060610205023018	060610211032003	060610211034008	060610211281004
060610205023019	060610211032004	060610211034009	060610211281005
060610205023020	060610211032005	060610211034010	060610211281006
060610205023021	060610211032006	060610211034011	060610211281007
060610205023022	060610211032007	060610211034012	060610211281008
060610205023023	060610211032008	060610211034013	060610211282000
060610205023024	060610211032009	060610211034014	060610211282001
060610205023025	060610211032010	060610211034015	060610211282002
060610205023027	060610211032011	060610211034016	060610211282003
060610205023068	060610211032012	060610211034017	060610211282004
060610206072004	060610211032013	060610211034018	060610211282005
060610206081018	060610211032014	060610211034019	060610211282006
060610206081019	060610211032015	060610211034020	060610211282007
060610206081020	060610211032016	060610211034021	060610211282008
060610206081021	060610211033000	060610211061006	060610211282011
060610211031000	060610211033001	060610211062007	060610211282012
060610211031001	060610211033002	060610211062008	060610211282013
060610211031002	060610211033003	060610211062009	060610211282014
060610211031003	060610211033004	060610211062010	060610211282015
060610211031004	060610211033005	060610211062014	060610211282016

060610211282017	060610212032035	060610212042023
060610211282018	060610212032036	060610212042024
060610211282019	060610212032037	060610212042025
060610211282020	060610212032038	
060610211282021	060610212032039	
060610211282022	060610212032040	
060610212031000	060610212032041	
060610212031001	060610212032042	
060610212031003	060610212032043	
060610212031004	060610212032044	
060610212031005	060610212032045	
060610212031006	060610212032046	
060610212031007	060610212032047	
060610212031008	060610212032048	
060610212031009	060610212032049	
060610212031010	060610212032050	
060610212031011	060610212032051	
060610212031012	060610212032052	
060610212031013	060610212033002	
060610212031014	060610212033003	
060610212031015	060610212033010	
060610212031016	060610212041000	
060610212031017	060610212041019	
060610212031018	060610212041020	
060610212031019	060610212041023	
060610212031020	060610212041024	
060610212031021	060610212041025	
060610212031022	060610212041030	
060610212031023	060610212041032	
060610212031024	060610212041033	
060610212031025	060610212041034	
060610212031026	060610212042000	
060610212031028	060610212042001	
060610212031029	060610212042002	
060610212031030	060610212042003	
060610212031031	060610212042004	
060610212032016	060610212042005	
060610212032023	060610212042006	
060610212032024	060610212042007	
060610212032026	060610212042008	
060610212032027	060610212042009	
060610212032028	060610212042010	
060610212032029	060610212042011	
060610212032030	060610212042012	
060610212032031	060610212042013	
060610212032032	060610212042014	
060610212032033	060610212042021	
060610212032034	060610212042022	



Ordinance 22-01
 Attachment B
 Ward Boundaries

Map prepared by: SPMUD
 Data prepared by: Redistricting Insights, LLC



SOUTH PLACER
 MUNICIPAL UTILITY DISTRICT



- Ward 1
- Ward 2
- Ward 3
- Ward 4
- Ward 5