

PRETREATMENT PROGRAM

COMMERCIAL FOG UPDATE



Aaron Moore, Lead Inspector
Justin Roston, FOG Inspector
Carie Huff, District Engineer

August 3, 2023



WHY A FATS, OILS AND GREASE (FOG) PROGRAM

The Problem with Fats, Oils and Grease. Fats, oils and grease (FOG) come from various sources including meat, lard, cooking oil, butter, milk products, shortening, salad dressings, and sandwich spreads. You can find them in fryers, pots and pans, food scraps and spoiled food, and on floors, cooking surfaces and dirty dishes. The trouble starts when FOG gets into the sewer through sinks and floor drains.

Sewer lines can become blocked, which can cause untreated wastewater to overflow into your establishment and into storm drains that lead to creeks and waterways. Sewage spills can spread disease, pollute streets and rivers, require expensive cleanup, and even lead to closed businesses. In addition, sewer lines that receive unmitigated or unacceptable levels of FOG discharge can lead to corrosion and deterioration. This can result in complete failure of the sewer lines.

Food service establishments (FSEs) have been found to be major sources of the fats, oils and grease that enter the sewer system.



Clean Pipe



Grease Clogged Pipe



FOG Related Deterioration



Grease Coated Pipe



Sewer Spill



FOG Related Corrosion

Don't Get Stuck Paying Fines and Cleanup Costs

Overflows impacting your business, the public health, waterways, and storm drains may result in expensive fines and cleanup costs. Preventing FOG from entering sewers helps to avoid these problems.

Benefits of Keeping FOG from Going Down the Drain

Preventing grease-related sewer blockages and overflows benefits your business, your pocketbook, and the environment by:

- Avoiding loss of business due to sewer back-ups.

- Avoiding expensive cleanup costs and penalties.

- Eliminating unnecessary rate increases due to more frequent FOG related sewer maintenance.

- Keeping the environment clean and green.

SOUTH PLACER MUNICIPAL UTILITY DISTRICT — 5807 SPRINGVIEW DRIVE, ROCK, CA 95677
OFFICE: (916) 786-8555

WWW.SPMUD.CA.GOV

AGENDA

- FOG Program Objectives
- Timeline and History
- Where We Are Now
- The Tools We Use
- Legacy GCD Issues (Indoor and Outdoor)
- Corrosive Resistant Hydromechanical GCD
- Challenges
- Where We Want To Go

FOG PROGRAM OBJECTIVES

- Protect Public Health and Environment By Eliminating Sewer System Overflows
- Reduce FOG Discharges Into the Collection System
- Reduce Maintenance and Treatment Costs
- Build Relationships with FSE's/Owners
- Compliance Through Education and Evidence Based Enforcement





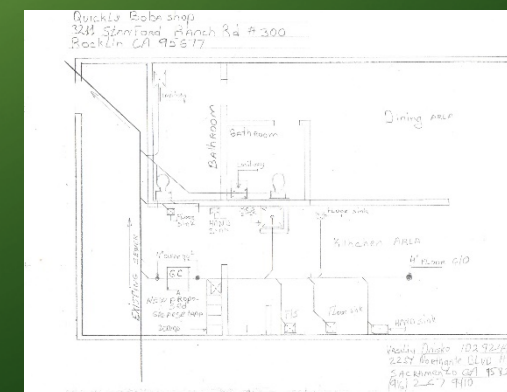
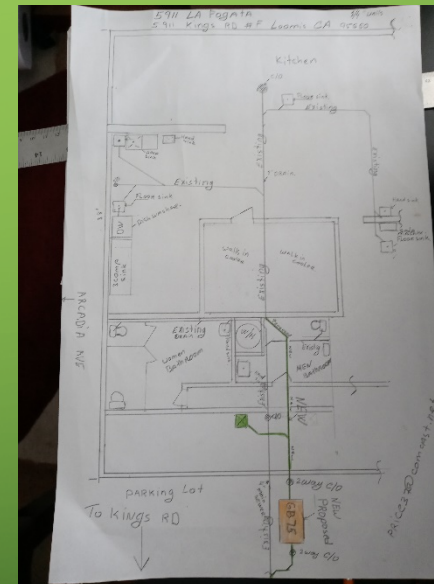
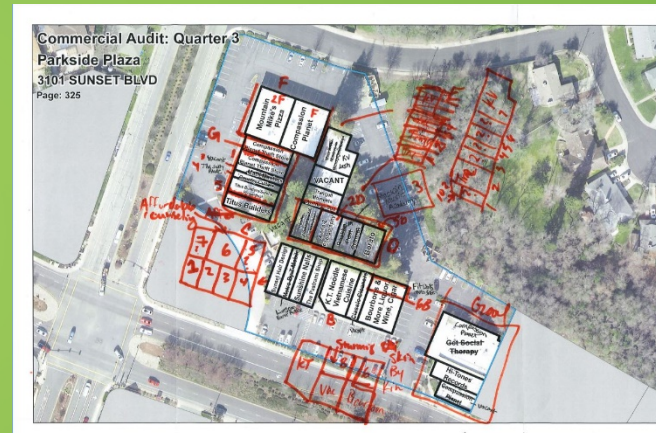
TIMELINE AND HISTORY

- 2004
 - EPA sends report to Congress on CSO's and SSO's
- 2006
 - State Water Resources Control Board – No. 2006-0003-DWQ
- 2007
 - EPA – National Pretreatment Program – 40 CFR 403
- 2009
 - Ordinance 09-01
- 2016
 - District Funded FOG Inspector Position
- 2017
 - Streamlined FOG Permitting Through TI Process
- 2018
 - Sewer Code Update
 - SwiftComply (Compliance Reporting Software)
- 2019
 - GCD Pump Outs Reported by FSE's and Grease Haulers
- 2020
 - Completed Inspection and Data Collection of Outdoor GCD's
- 2021
 - Required Efficiency Rating Certification for Proposed GCD's
- 2022
 - Consulted with an Industry Expert for Review and Update of District Specifications and Sewer Code
- 2023
 - Sewer Code Update – Additional FOG Requirements



WHERE WE ARE NOW

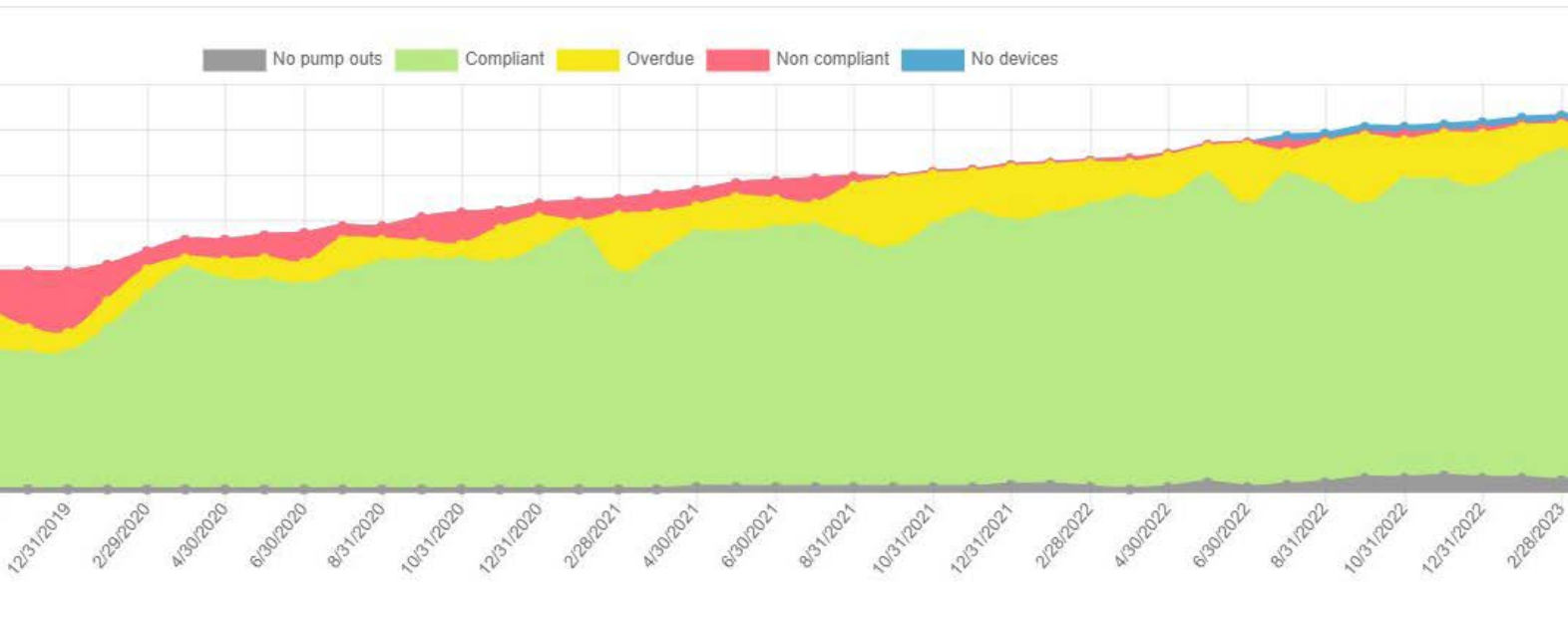
- Commercial Audit Process
 - Advanced Notification of FOG Program Requirements
- FSE – Tenant Improvements
 - Inspector Driven Plan Review
- Indoor GCD Inspections
 - Evaluating, Educating and Building Inventory
 - Case by Case Compliance
- Enforcing Sewer Code Updates in the Field and Office
- Updating District Standards and Specifications (In Process)
- Routinely Inspecting Outdoor GGI's
- Working with FSE's to Determine Effective Cleaning Frequencies



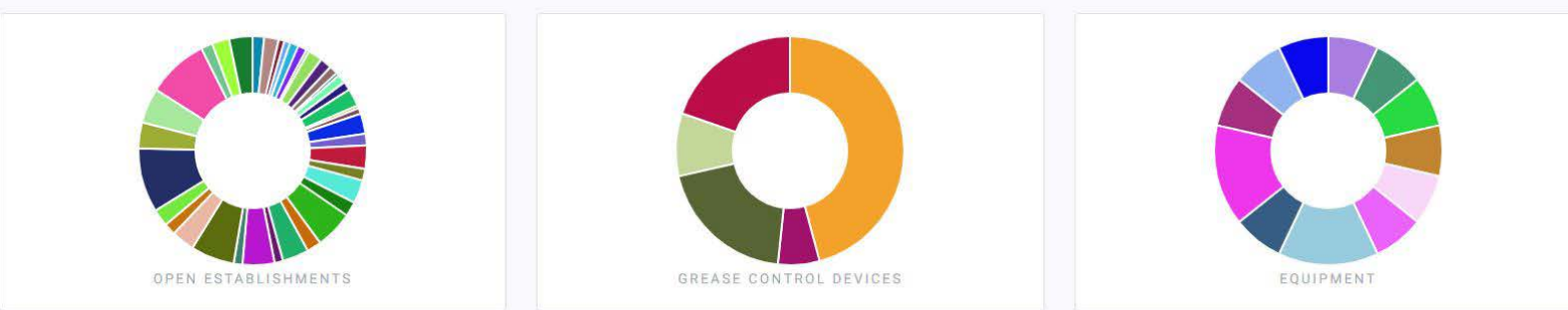


THE TOOLS WE USE

- Dipstick Pro - Outdoor
- CORETAKER MAX - Indoor
- Stand for Dipstick Pro
- Portable CCTV Camera
- Atmosphere Monitor
- FOG Truck
 - Chemical Tank with Sprayer
 - Core Sample Transport Tube
- Infrared Thermometer
- Coming Soon:
 - Grab Sampling Equipment
 - pH Meter



252 OPEN ESTABLISHMENTS	468 CONTACTS	203 GREASE CONTROL DEVICES	74.60% GCD ADOPTION
-----------------------------------	------------------------	--------------------------------------	-------------------------------



From To

2,753 FOG PUMP OUTS	2,231,154 GALLONS FOG
	4

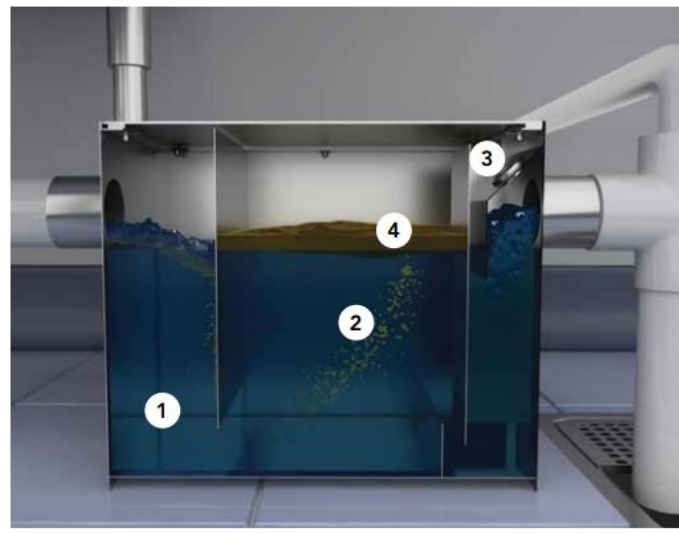
SWIFTCOMPLY

- Complete and Comprehensive FOG Compliance Software
 - Customizable Digital Inspection Forms
 - Customizable Enforcement Tracking
 - User Friendly Pump-out Reporting (FSE, Property Owner and Grease Hauler)
 - Notification Engine
 - Web Based for Field and Office Use

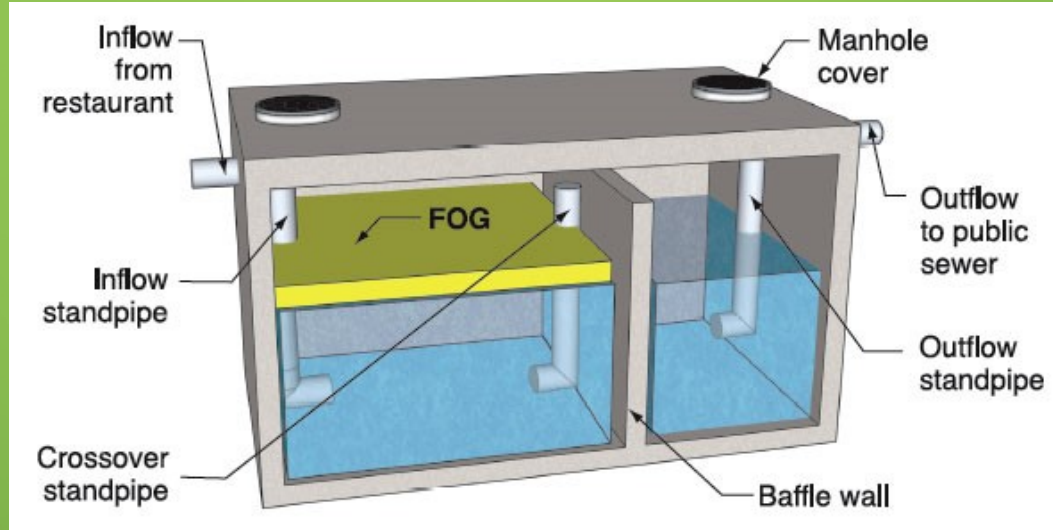
LEGACY GCD'S - INDOOR



1. FOG Laden wastewater enters the separation chamber of the interceptor, while baffles separate FOGs in a non-turbulent environment
2. Escaping air helps separate the FOG laden wastewater quickly and bring them to the surface
3. Released air regulates internal running water level
4. FOG reduced effluent discharges from the grease interceptor and into the sewer system



LEGACY GCD's - OUTDOOR





CORROSIVE RESISTANT HYDROMECHANICAL GCD'S



- Made from Polyethylene
- Wide range of sizes to handle various installation needs
 - Can be installed above-grade and below-grade
 - Indoor and outdoor
- Significantly smaller in size than legacy outdoor GCD's
 - Lower pump out costs
- Comparable pricing to legacy GCD's (unit x unit)
 - Lower installation costs
- Third party performance-tested with certification
 - Greatly exceeds requirements for grease separation and storage

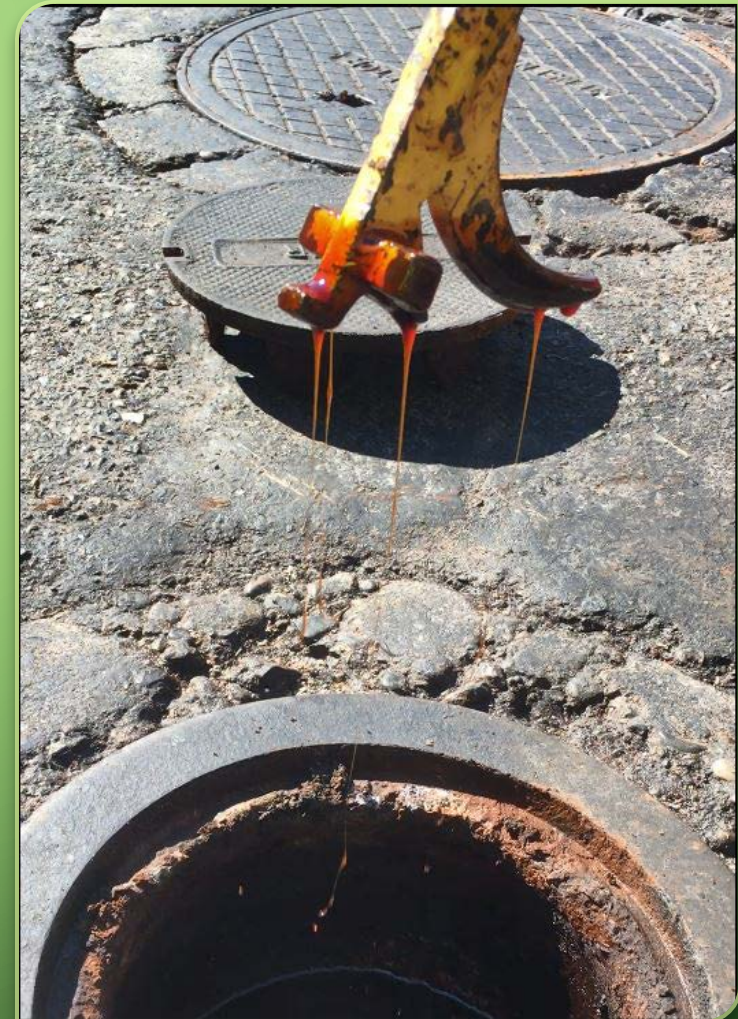


CHALLENGES

- FOG Program development varies significantly agency to agency
- Multiple authorities having jurisdiction over commercial properties
- Legacy Indoor GCD Units approved under a separate authority prior to FOG Program Implementation
- Legacy Outdoor GCD Units installed prior to FOG Program implementation
- Negligent and non-compliant FSE's

WHERE WE WANT TO GO

- 100% compliance
- Build on our accomplishments
- Adapt with the industry
- Create a Fine Schedule
- Expand the District's Pretreatment Program to encompass both Commercial FOG Contributors and Industrial Users



USMH: 108-024
DSMH: 108-041

General Observation
Indication of Previous Mainline Stoppage
11.5 ft.

Station	Value 2	%	Joint	Clock 1	Clock 2	Grade	Remarks	Cont.	VCR Time
0							108-024		
5									
7							S01		

QUESTIONS?