



SPMUD Asset Management

APRIL 6, 2023

Strategic Plan

Priority

- Leverage existing and applicable technologies to improve efficiencies

Work Plan

- Develop a Tactical Asset Management Plan

Strategic vs. Tactical

Strategic

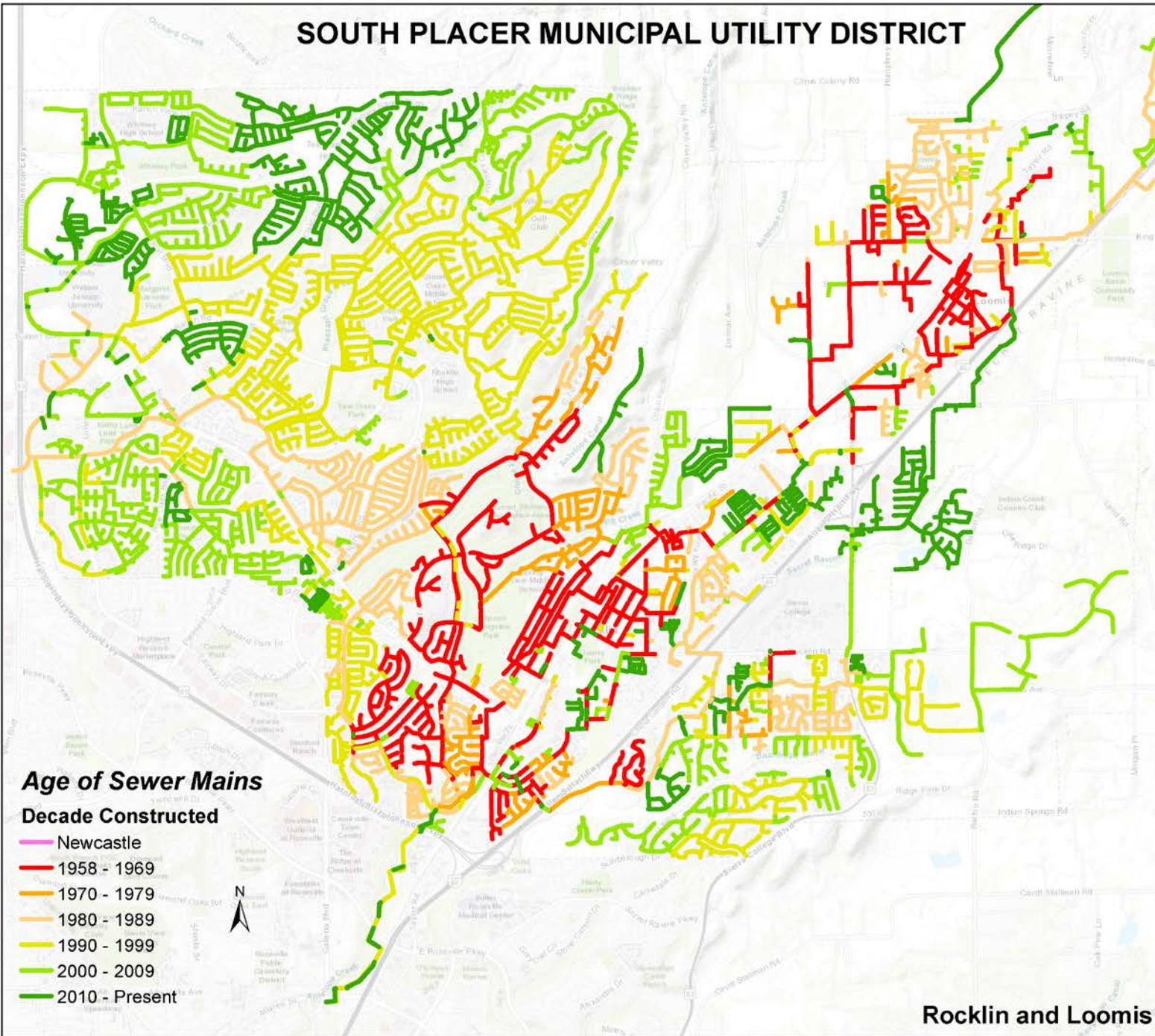
- Written visioning statement
- Identify what the District hopes to achieve from the program

Tactical

- Identifies asset types
- Establishes decision-making criteria
- Describes procedures

Practical

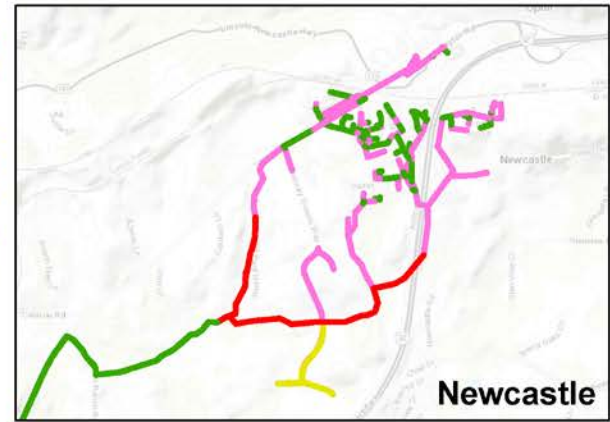
SOUTH PLACER MUNICIPAL UTILITY DISTRICT



Age of Sewer Mains

Decade Constructed

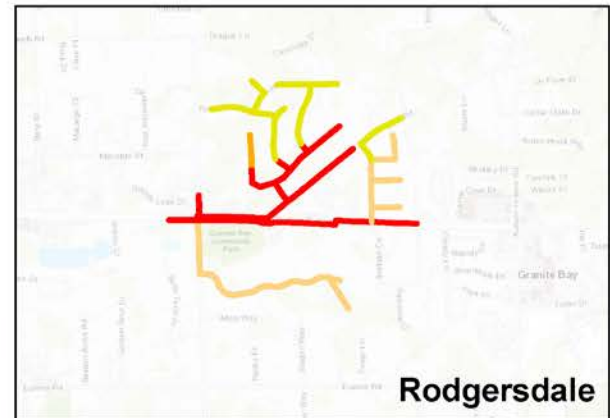
- Newcastle
- 1958 - 1969
- 1970 - 1979
- 1980 - 1989
- 1990 - 1999
- 2000 - 2009
- 2010 - Present



Newcastle



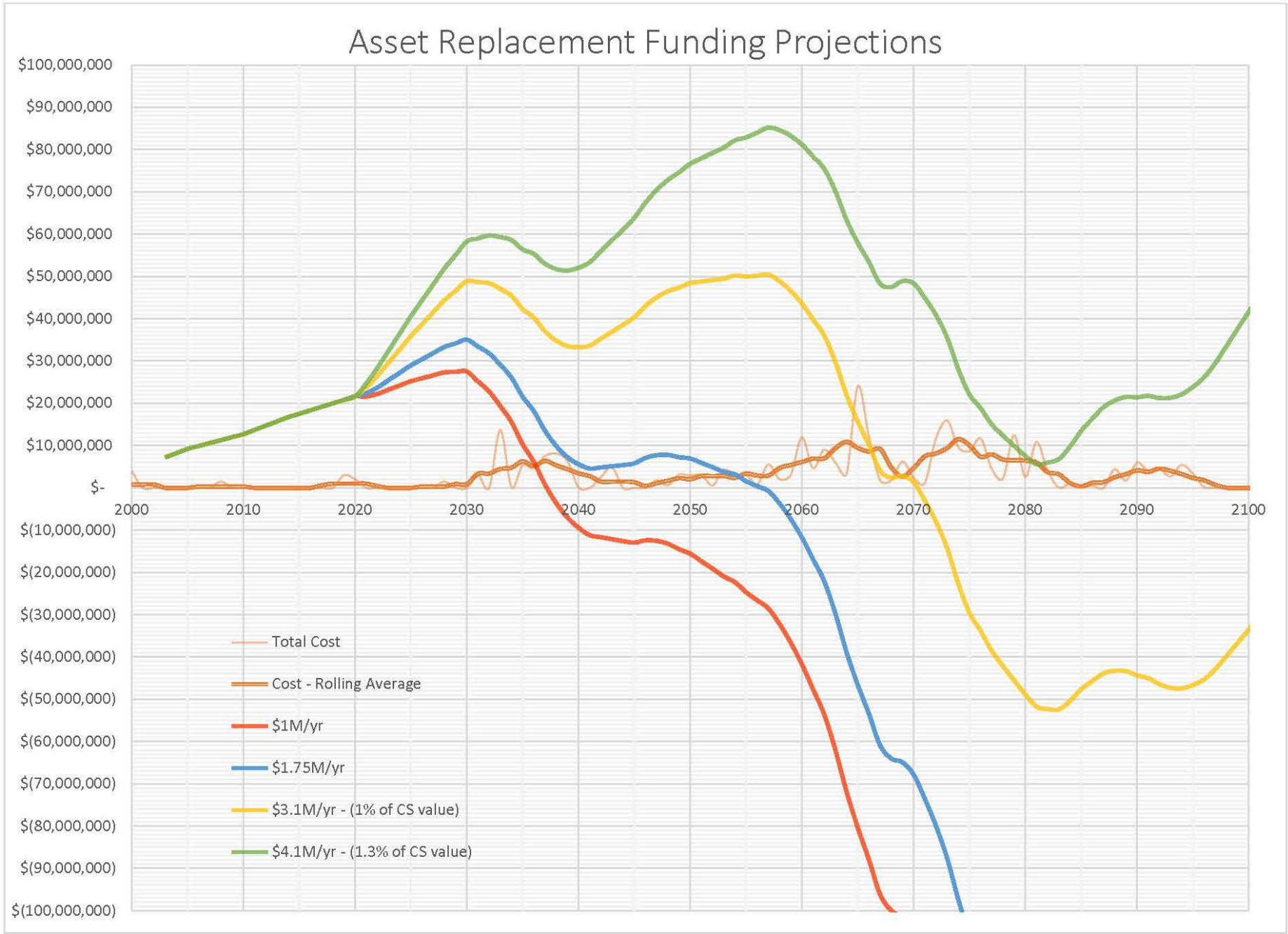
Penryn



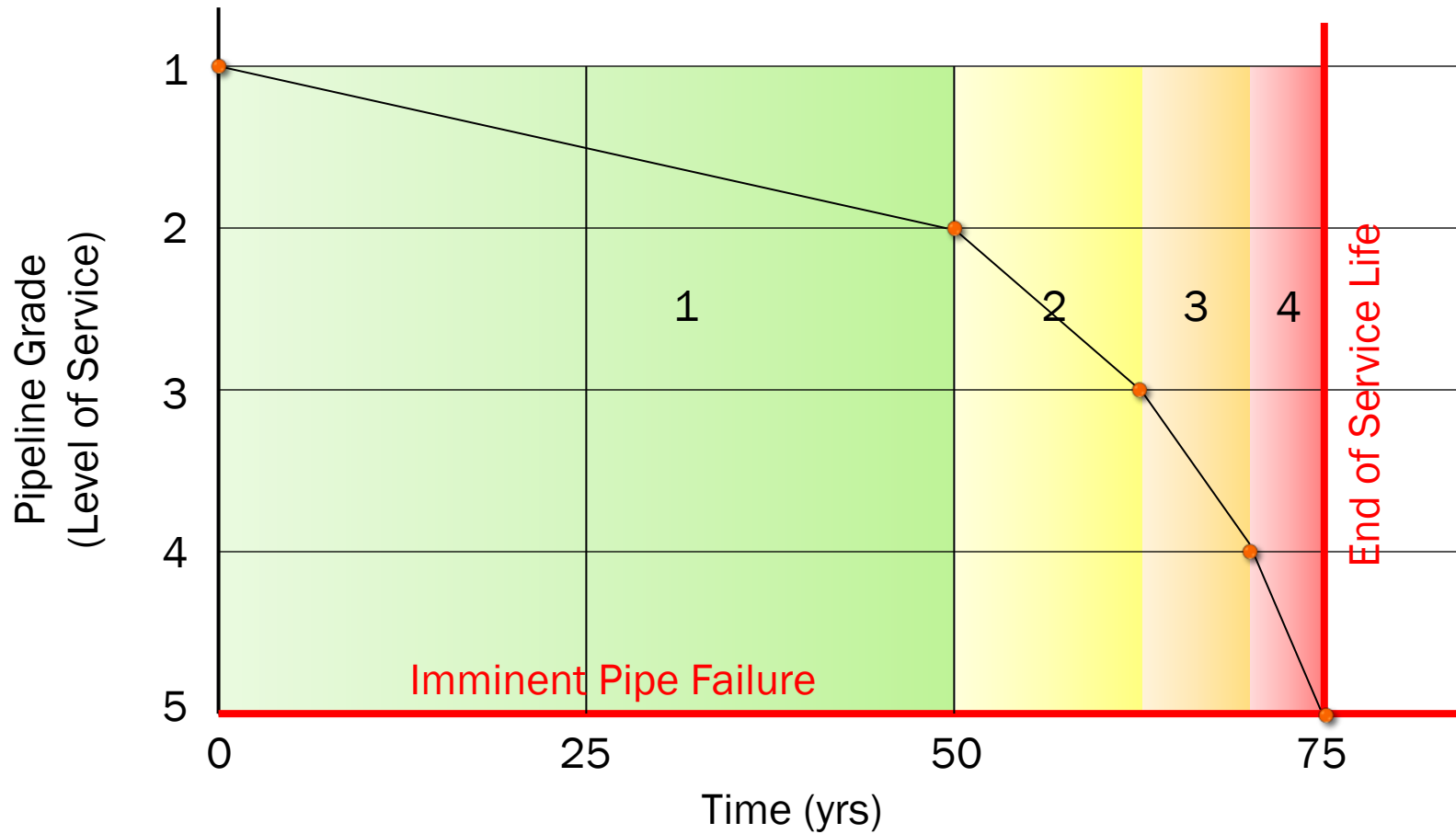
Rocklin and Loomis

Rodgersdale

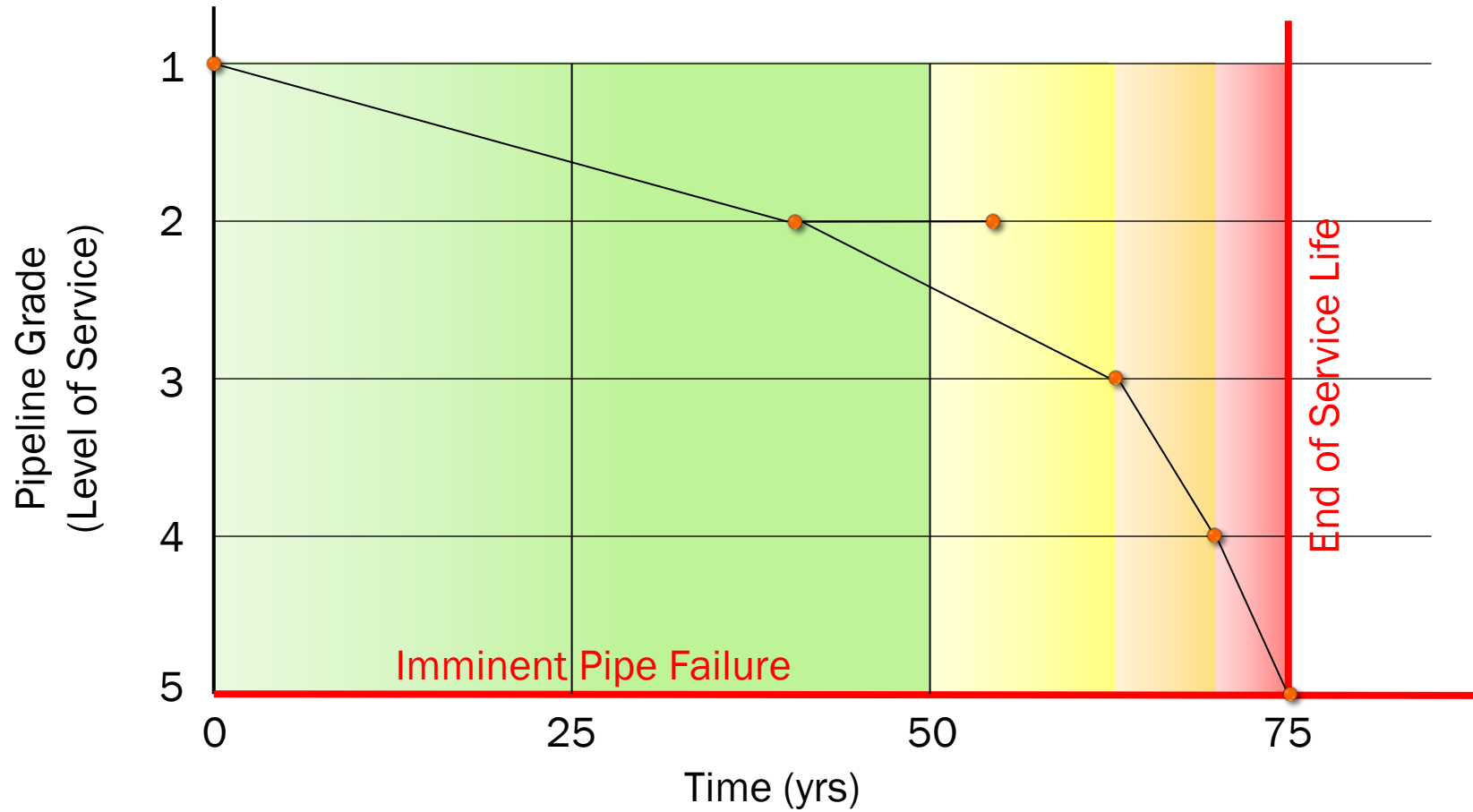
“Nessie” Curves



Estimate Remaining Service Life



Extended Service Life



Condition Assessment - Systems

- CCTV Inspection

- Software

- ITpipes

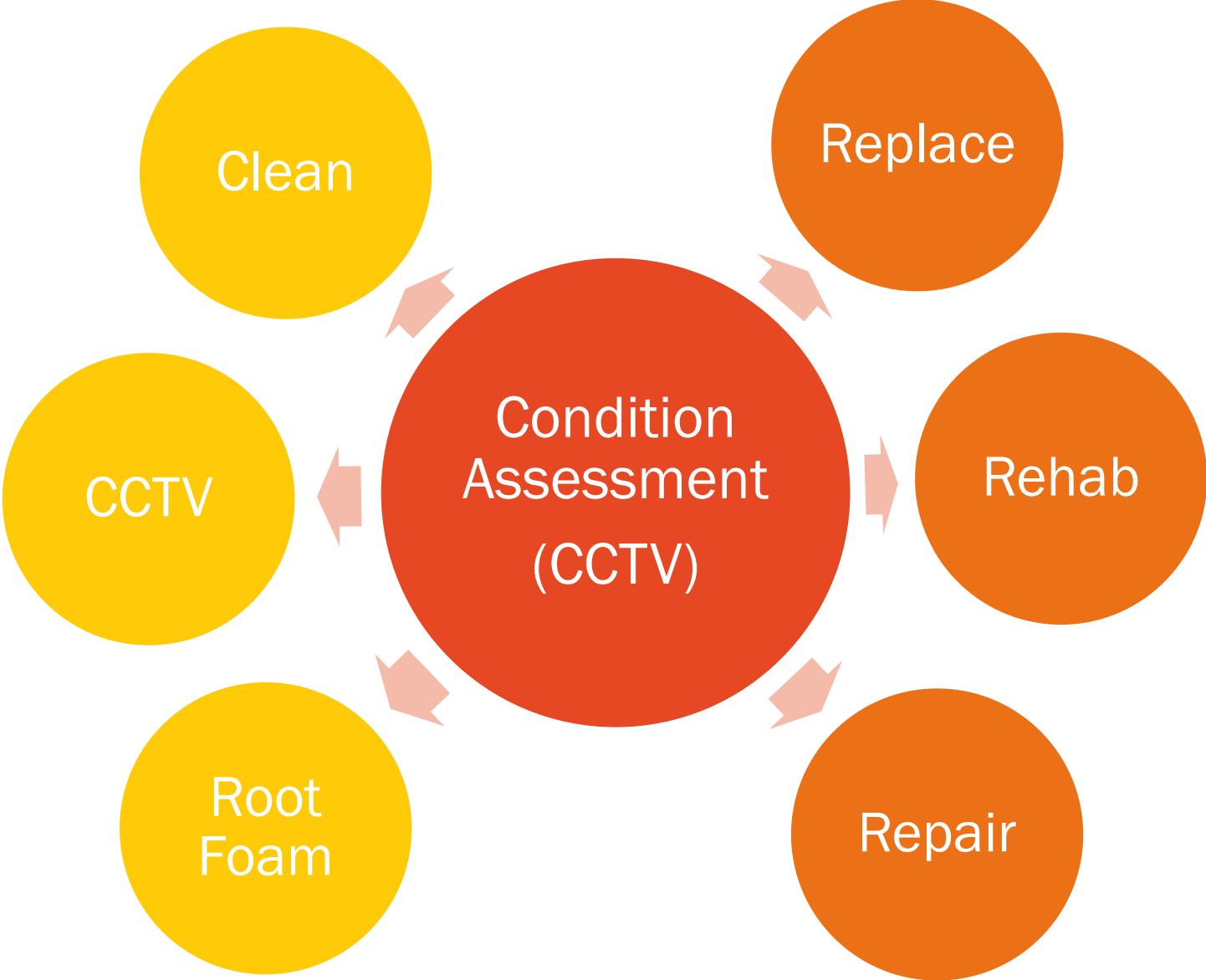
- Standardized Coding

- NASSCO PACP



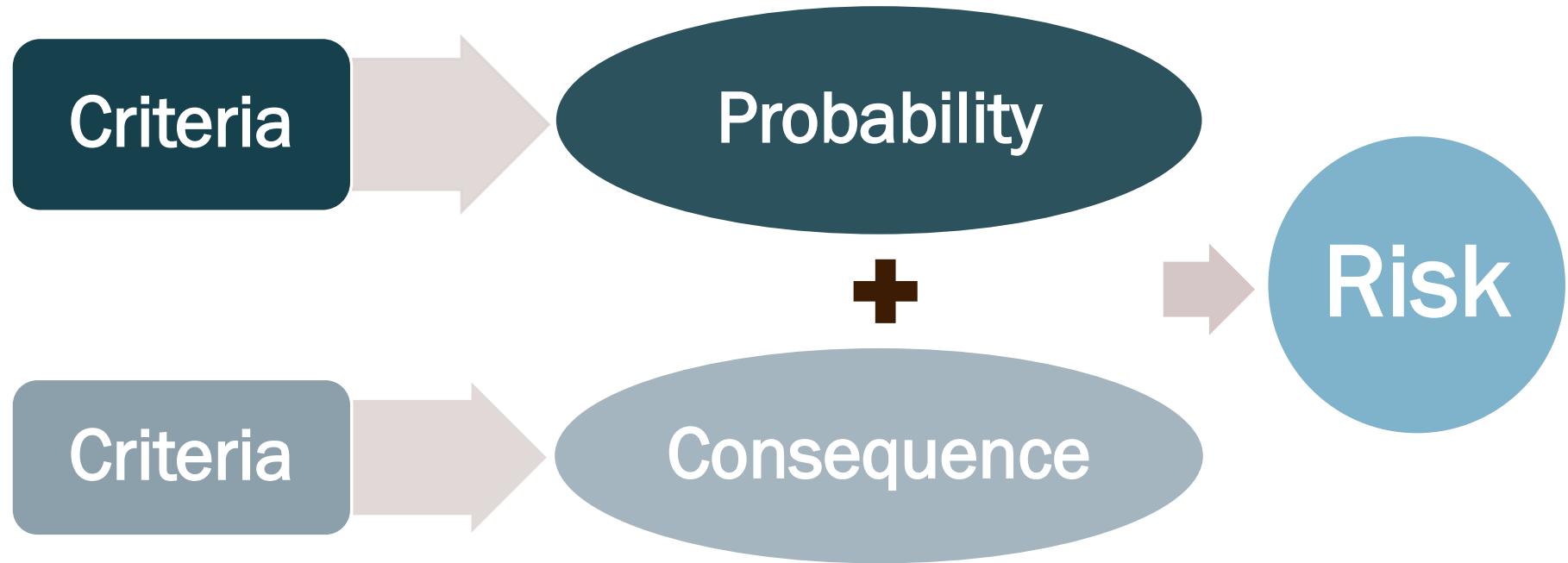


Inspection-Driven



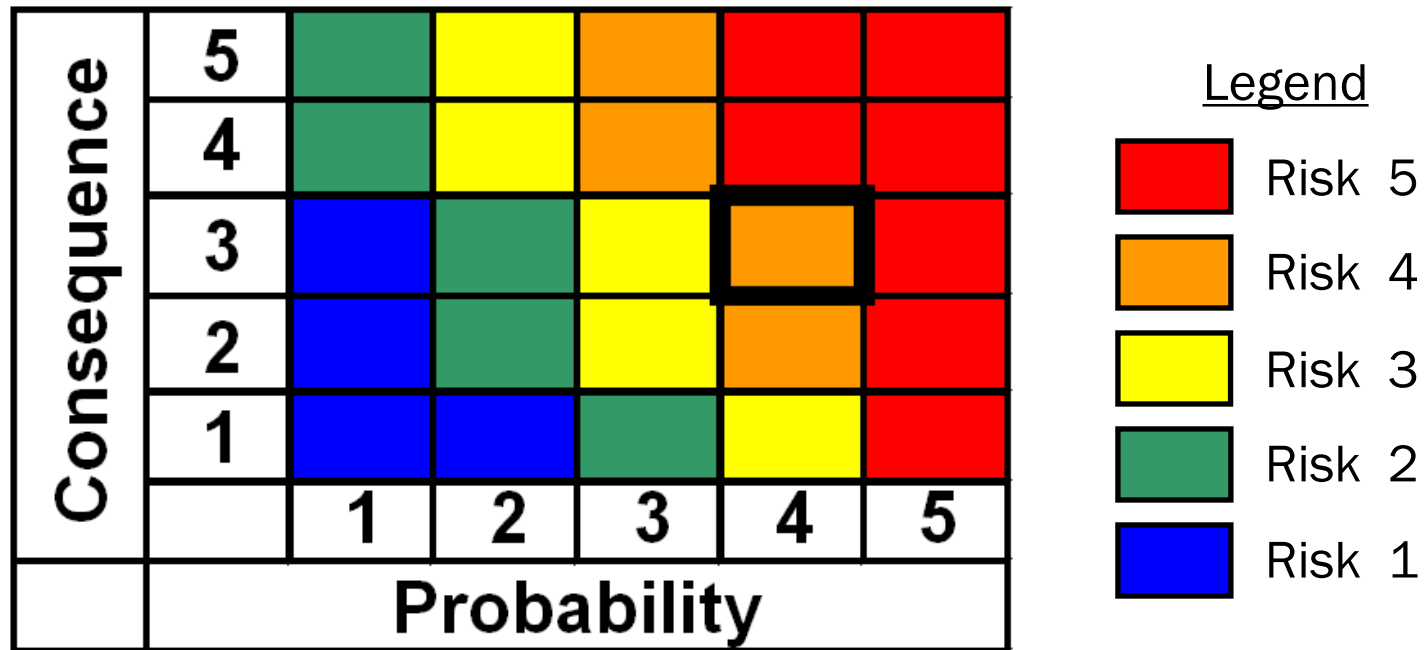
Risk of Failure

- Risk = Probability x Consequence



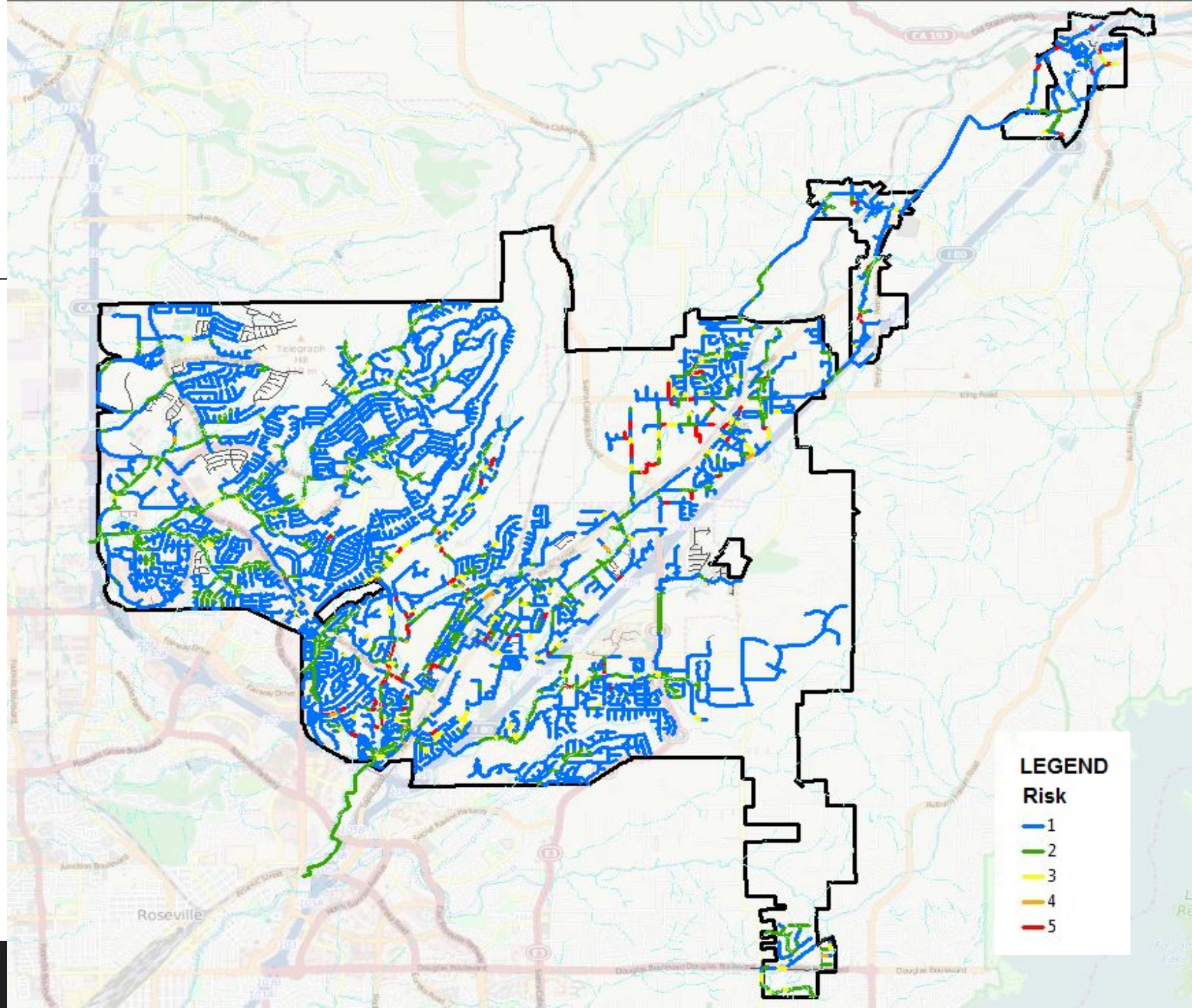
Risk Assessment

Risk Rating Matrix



Example: An asset with a probability rating of 4, and a consequence rating of 3, result in an overall risk rating of 4.

Risk Map



Asset ID: SGM1264

Type: ACT

Upstream ID: SMH501

Downstream ID: SCO292

GIS/CCTV Diam. (in): 6 6

GIS/CCTV Length (ft): 117.5 166.5

GIS/CCTV Material: VCP ZZZ

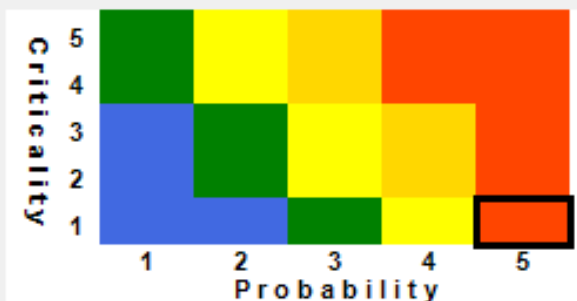
Avg. Depth: 5.8

YIS: 1969

Service Connections: 1

Max D/d: -1

Flow Volume: -1



Calc. Risk: 5

User Risk: ...

Last Evaluated: 9/21/2010

Author:

CCTV Date: 2/22/2008

New Data

Probability Rating

Total: 5

Structural O&M Maint. Hist.

5 5 1

Capacity: 0

Criticality Rating

Total: 1

Volume Waterway Public Imp.

1 1 1

O&M Summary

Assigned Activities: 1

Projected Cost (\$): 8,320

Annualized Cost (\$): 1,664

O&M vs RRR Cost

Years when O&M=RRR: 4

RRR Summary

Assigned Activities: 1

Projected Cost (\$): 6,688

Annualized Cost (\$): 167

Total Cost (\$): 15,008

O&M

RRR

O&M Activity	Frequency	Activity Cost (\$)	User Cost (\$)	Annual Cost (\$)	Duration (YR)	Total Cost (\$)
CCTV Inspection	Every 6 months	832		1,664	5	8,320

Add OM Activity

Delete OM Activity

Save

Close

Print Display

Reject Changes

Asset ID: SGM1264

Type: ACT

Upstream ID: SMH501

Downstream ID: SCO292

GIS/CCTV Diam. (in): 6 6

GIS/CCTV Length (ft): 117.5 166.5

GIS/CCTV Material: VCP ZZZ

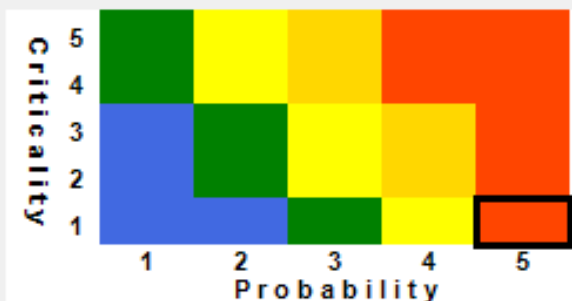
Avg. Depth: 5.8

YIS: 1969

Service Connections: 1

Max D/d: -1

Flow Volume: -1



Calc. Risk: 5

User Risk: ...

Last Evaluated: 9/21/2010

Author:

CCTV Date: 2/22/2008

New Data

Probability Rating

Total: 5

Structural O&M Maint. Hist.

5 5 1

Capacity: 0

Criticality Rating

Total: 1

Volume Waterway Public Imp.

1 1 1

O&M Summary

Assigned Activities: 1

Projected Cost (\$): 8,320

Annualized Cost (\$): 1,664

O&M vs RRR Cost

Years when O&M=RRR: 4

RRR Summary

Assigned Activities: 1

Projected Cost (\$): 6,688

Annualized Cost (\$): 167

Total Cost (\$): 15,008

O&M

RRR

RRR Activity	New Diam.	New Mat.	Repair Length	CIP	Base Cost (\$)	Design Cost (\$)	Special Cost (\$)	Cont. %	Activity Cost (\$)	User Cost (\$)	Cost / ft
Rehabilitation-Sliplining	same	same	166.5	2012 Rehab Project	5,350	1,338	0	0	6,688		40

Add RRR Activity

Delete RRR Activity

Also Show Completed Activities

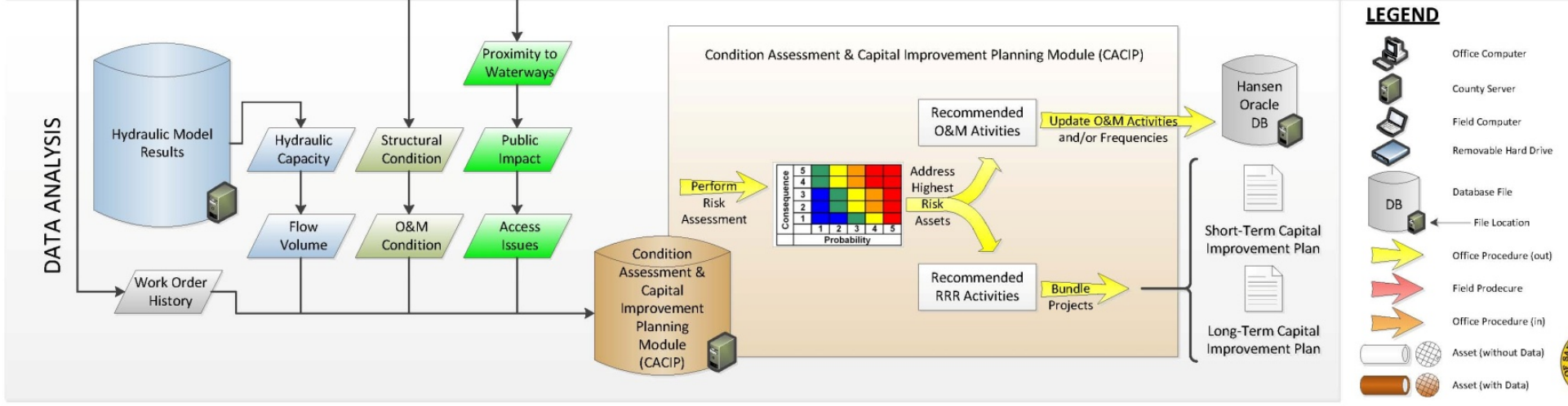
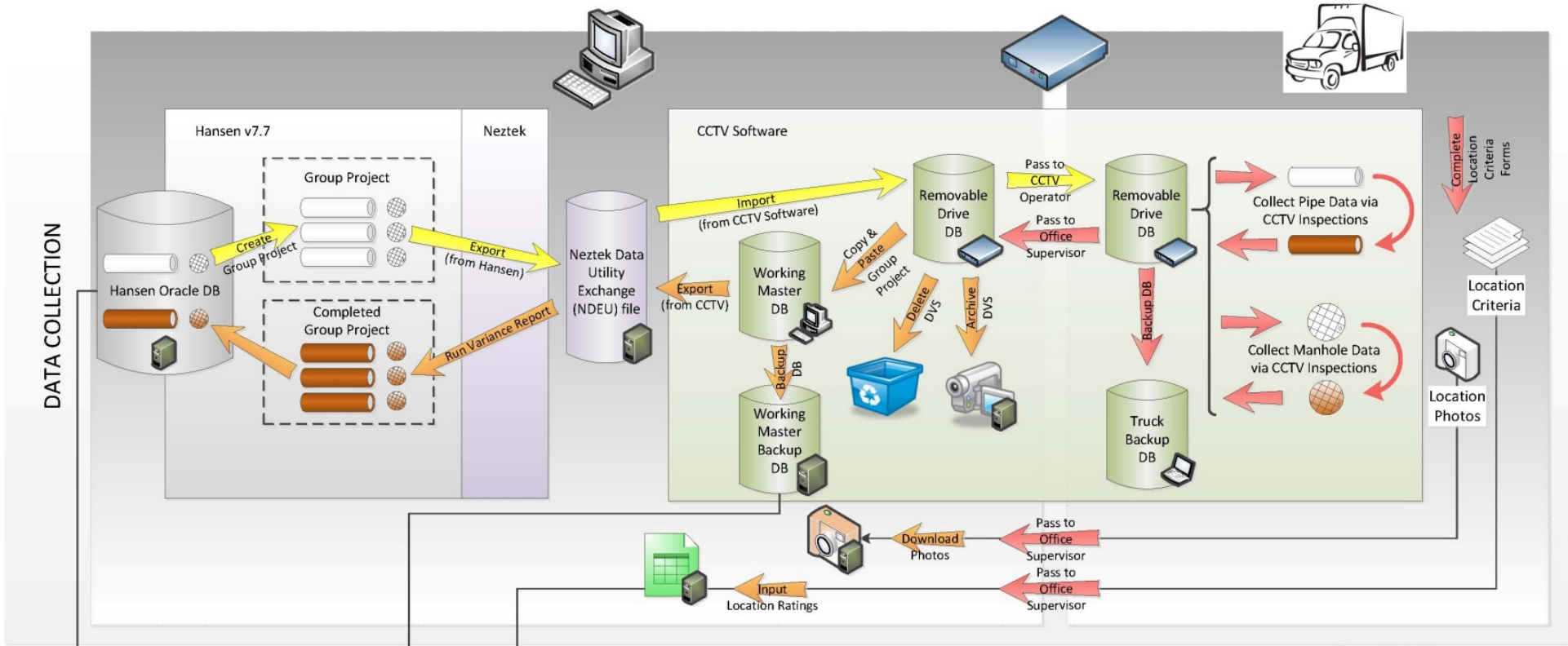
Open CIP Module

Save

Close

Print Display

Reject Changes



LEGEND

- Office Computer
- County Server
- Field Computer
- Removable Hard Drive
- Database File
- File Location
- Office Procedure (out)
- Field Procedure
- Office Procedure (in)
- Asset (without Data)
- Asset (with Data)

Strategic Plan Timeline

2023	2024	2025	2026
July	July	December	December
Update asset inventories	Assess all lift stations	Draft Asset Management Plan	Final Asset Management Plan
December			
Establish criteria for renewal decisions			